

Evaluarea Națională 2017

Rezultate după contestații 30 iunie 2017

La Evaluarea Națională din **144.929** candidați înscriși s-au prezentat **140.712** prezența fiind de **97,1%**.

Din cei **140.712** de candidați prezenți, un număr de:

- **108.294** candidați (**77,0%**) au obținut medii mai mari sau egale cu 5
- **32.418** candidați (**23,0%**) au obținut medii mai mici ca 5
- **497** candidați au obținut media **10**

La proba de limbă și literatura română:

- **121.315** candidați (**86,1%**) au note peste 5
- **1.745** candidați au obținut nota 10

La proba de matematică:

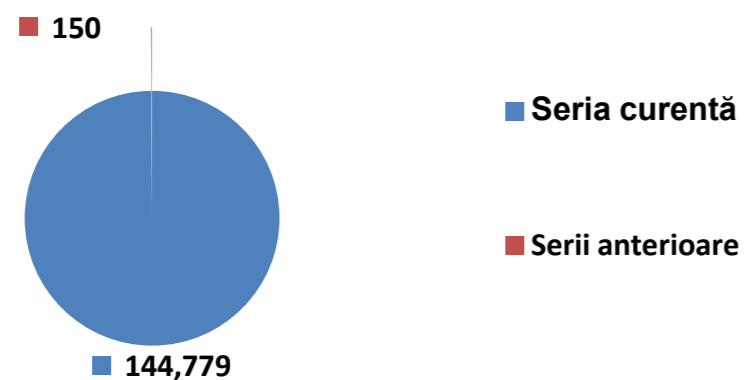
- **92.886** candidați (**66,0%**) au note peste nota 5
- **4.450** candidați au obținut nota 10

Istoric evaluare națională 2013-2017								
An	Înscriși	Prezenți	Procent prezență	Medii cel puțin 5	% cel puțin 5	Medii sub 5	% sub 5	Media 10
2013	166,712	162,331	97.4%	123,194	75.9%	39,137	24.1%	856
2014	165,188	160,011	96.9%	113,721	71.1%	46,290	28.9%	225
2015	163,408	158,576	97.0%	125,840	79.4%	32,736	20.6%	456
2016	153,673	148,648	96.7%	111,598	75.1%	37,050	24.9%	253
2017	144,929	140,712	97.1%	108,294	77.0%	32,418	23.0%	497

Istoric evaluare națională 2013-2017 (limba română)								
An	Înscriși	Prezenți	Procent prezență	Medii cel puțin 5	% cel puțin 5	Medii sub 5	% sub 5	Media 10
2013	166,712	162,331	97.4%	134,025	82.6%	28,306	17.4%	1,550
2014	165,188	160,011	96.9%	117,469	73.4%	42,542	26.6%	599
2015	163,408	159,010	97.3%	135,947	85.5%	23,063	14.5%	1,137
2016	153,673	149,122	97.0%	122,557	82.2%	26,565	17.8%	1,244
2017	144,929	141,101	97.4%	121,315	86.0%	19,786	14.0%	1,745

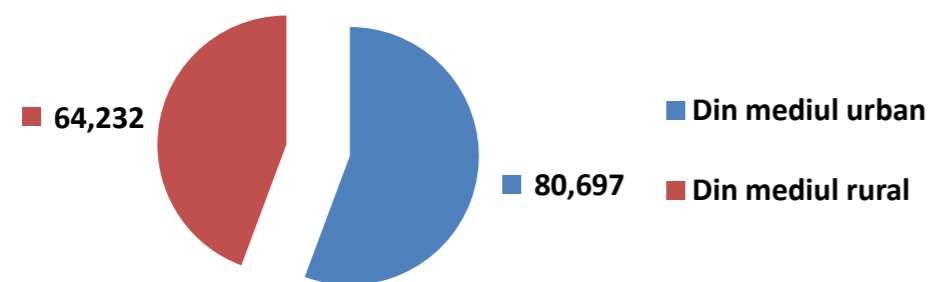
Istoric evaluare națională 2013-2017 (matematică)								
An	Înscriși	Prezenți	Procent prezență	Medii cel puțin 5	% cel puțin 5	Medii sub 5	% sub 5	Media 10
2013	166,712	162,331	97.4%	116,297	71.6%	46,034	28.4%	11,092
2014	165,188	160,011	96.9%	116,724	72.9%	43,287	27.1%	4,360
2015	163,408	158,572	97.0%	116,641	73.6%	41,931	26.4%	5,873
2016	153,673	148,645	96.7%	100,123	67.4%	48,522	32.6%	2,604
2017	144,929	140,723	97.1%	92,886	66.0%	47,837	34.0%	4,450

Prezență evaluare națională pe județe																		
Județ	Candidați înscrși	Candidați prezenți Română	% prezenți Română	Candidați absenți Română	Candidați eliminați din examen Română	Candidați eliminați cu 1 Română	Candidați înscrși Maternă	Candidați prezenți Maternă	% prezenți Maternă	Candidați absenți Maternă	Candidați eliminați din examen Maternă	Candidați eliminați cu 1 Maternă	Candidați prezenți Matematică	% prezenți Matematică	Candidați absenți Matematică	Candidați eliminați din examen Matematică	Candidați eliminați cu 1 Matematică	Județ
AB	2,460	2,407	97.8%	53	0	0	77	77	100.0%	0	0	0	2,403	97.7%	57	0	0	AB
AG	4,653	4,565	98.1%	88	0	0	0	0		0	0	0	4,556	97.9%	97	0	0	AG
AR	3,060	2,969	97.0%	91	0	0	163	157	96.3%	6	0	0	2,957	96.6%	103	0	0	AR
B	11,598	11,557	99.6%	40	0	1	167	167	100.0%	0	0	0	11,542	99.5%	56	0	0	B
BC	4,935	4,698	95.2%	237	0	0	18	15	83.3%	3	0	0	4,679	94.8%	256	0	0	BC
BH	4,214	4,097	97.2%	117	0	0	782	739	94.5%	43	0	0	4,090	97.1%	124	0	0	BH
BN	2,410	2,346	97.3%	64	0	0	70	69	98.6%	1	0	0	2,343	97.2%	67	0	0	BN
BR	1,758	1,744	99.2%	14	0	0	0	0		0	0	0	1,743	99.1%	15	0	0	BR
BT	3,736	3,658	97.9%	78	0	0	0	0		0	0	0	3,650	97.7%	86	0	0	BT
BV	3,597	3,495	97.2%	102	0	0	395	393	99.5%	2	0	0	3,470	96.5%	127	0	0	BV
BZ	3,187	3,076	96.5%	111	0	0	0	0		0	0	0	3,062	96.1%	125	0	0	BZ
CJ	4,012	3,945	98.3%	67	0	0	520	520	100.0%	0	0	0	3,942	98.3%	70	0	0	CJ
CL	1,945	1,867	96.0%	78	0	0	0	0		0	0	0	1,858	95.5%	86	0	1	CL
CS	1,967	1,919	97.6%	48	0	0	21	21	100.0%	0	0	0	1,912	97.2%	55	0	0	CS
CT	5,209	5,144	98.8%	65	0	0	0	0		0	0	0	5,125	98.4%	84	0	0	CT
CV	1,488	1,453	97.6%	35	0	0	1,090	1,068	98.0%	22	0	0	1,448	97.3%	40	0	0	CV
DB	3,681	3,577	97.2%	104	0	0	0	0		0	0	0	3,565	96.8%	116	0	0	DB
DJ	4,357	4,204	96.5%	153	0	0	0	0		0	0	0	4,182	96.0%	175	0	0	DJ
GJ	2,961	2,884	97.4%	77	0	0	0	0		0	0	0	2,878	97.2%	82	0	1	GJ
GL	3,570	3,528	98.8%	42	0	0	0	0		0	0	0	3,522	98.7%	48	0	0	GL
GR	2,158	2,097	97.2%	61	0	0	0	0		0	0	0	2,089	96.8%	69	0	0	GR
HD	2,826	2,671	94.5%	155	0	0	51	50	98.0%	1	0	0	2,662	94.2%	164	0	0	HD
HR	2,622	2,582	98.5%	40	0	0	2,215	2,176	98.2%	39	0	0	2,581	98.4%	41	0	0	HR
IF	2,241	2,209	98.6%	31	0	1	9	9	100.0%	0	0	0	2,206	98.4%	35	0	0	IF
IL	1,937	1,898	98.0%	39	0	0	0	0		0	0	0	1,895	97.8%	42	0	0	IL
IS	6,106	5,945	97.4%	161	0	0	0	0		0	0	0	5,931	97.1%	175	0	0	IS
MH	1,806	1,762	97.6%	44	0	0	0	0		0	0	0	1,758	97.3%	48	0	0	MH
MM	3,882	3,656	94.2%	226	0	0	109	101	92.7%	8	0	0	3,645	93.9%	237	0	0	MM
MS	3,936	3,787	96.2%	149	0	0	1,389	1,362	98.1%	27	0	0	3,762	95.6%	174	0	0	MS
NT	4,123	4,074	98.8%	49	0	0	0	0		0	0	0	4,073	98.8%	50	0	0	NT
OT	2,743	2,646	96.5%	97	0	0	0	0		0	0	0	2,642	96.3%	101	0	0	OT
PH	5,183	5,096	98.3%	86	0	1	0	0		0	0	0	5,084	98.1%	99	0	0	PH
SB	2,867	2,616	91.2%	251	0	0	295	295	100.0%	0	0	0	2,602	90.8%	265	0	0	SB
SJ	1,896	1,808	95.4%	87	0	1	394	377	95.7%	17	0	0	1,804	95.1%	92	0	0	SJ
SM	2,546	2,422	95.1%	124	0	0	716	691	96.5%	25	0	0	2,416	94.9%	130	0	0	SM
SV	6,188	6,066	98.0%	122	0	0	0	0		0	0	0	6,044	97.7%	144	0	0	SV
TL	1,512	1,487	98.3%	25	0	0	0	0		0	0	0	1,479	97.8%	33	0	0	TL
TM	4,308	4,236	98.3%	72	0	0	176	173	98.3%	3	0	0	4,227	98.1%	81	0	0	TM
TR	2,379	2,279	95.8%	100	0	0	0	0		0	0	0	2,275	95.6%	104	0	0	TR
VL	2,720	2,656	97.6%	64	0	0	0	0		0	0	0	2,654	97.6%	66	0	0	VL
VN	2,618	2,515	96.1%	103	0	0	0	0		0	0	0	2,510	95.9%	108	0	0	VN
VS	3,534	3,460	97.9%	74	0	0	0	0		0	0	0	3,457	97.8%	77	0	0	VS
TOTAL	144,929	141,101	97.4%	3,824	0	4	8,657	8,460	97.7%	197	0	0	140,723	97.1%	4,204	0	2	TOTAL



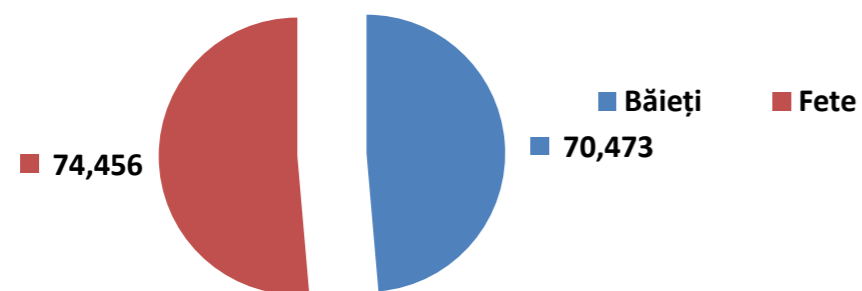
Baza de date conține 144929.0 de copii înscriși la evaluarea națională

- 144779.0 (100%) copii din seria curentă;
- 150.0 (00%) copii din serii anterioare.



Din cei 144929.0 de copii înscriși la evaluarea națională

- 80697.0 (56%) copii sunt din mediul urban;
- 64232.0 (44%) sunt din mediul rural.



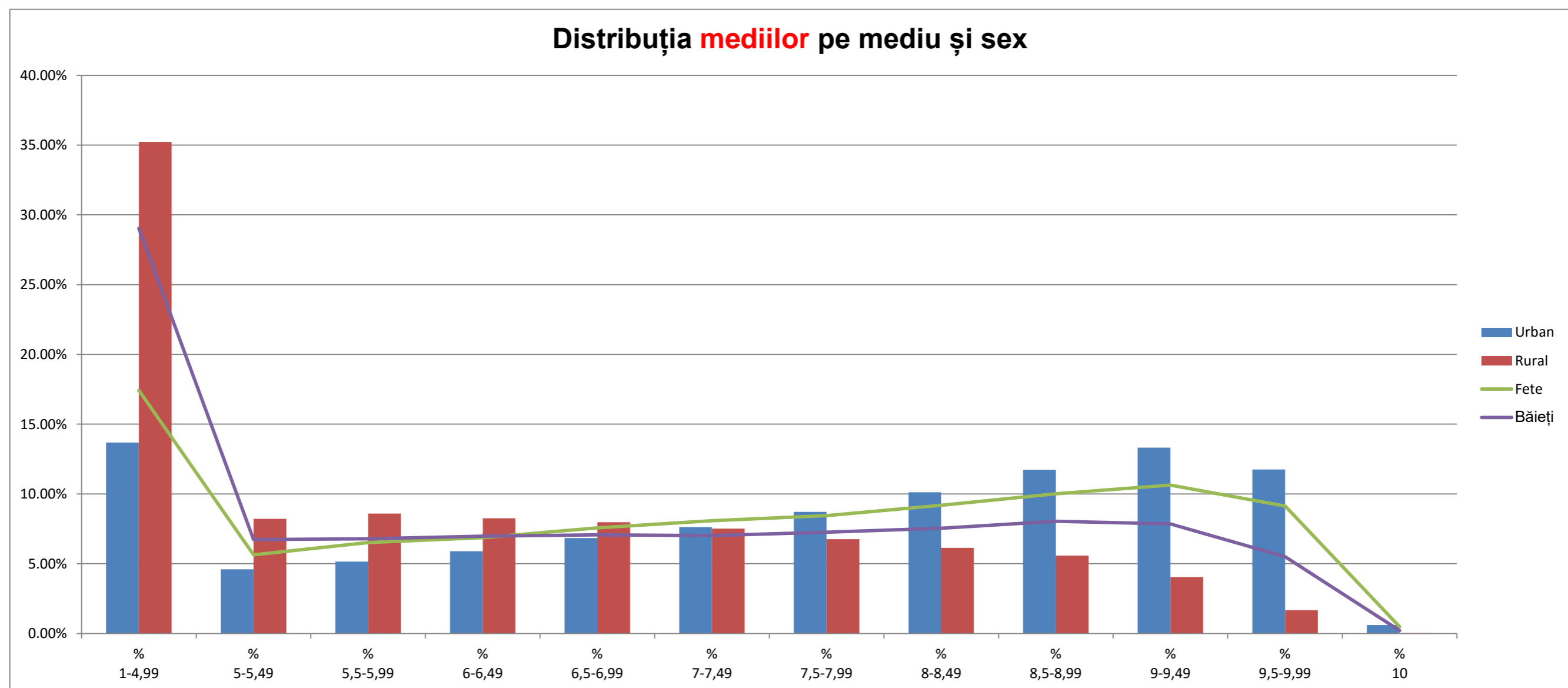
Din cei 144929.0 de copii înscriși la evaluarea națională

- 70473.0 (49%) sunt băieți;
- 74456.0 (51%) sunt fete.

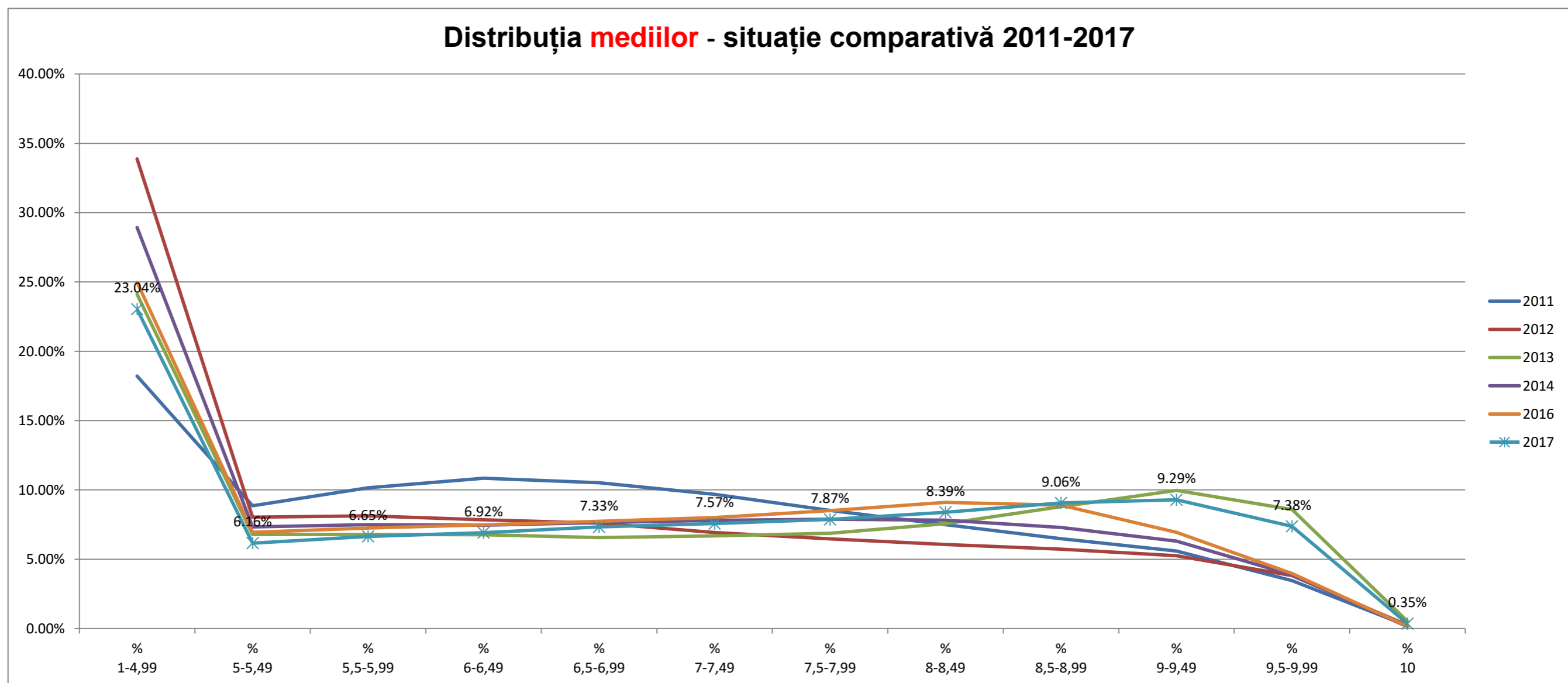
Situația pe medii la evaluarea națională

Județ	Candidați înscrși	Candidați cu medii	Cu medii 1-4,99	Cu medii 5-5,49	Cu medii 5,5-5,99	Cu medii 6-6,49	Cu medii 6,5-6,99	Cu medii 7-7,49	Cu medii 7,5-7,99	Cu medii 8-8,49	Cu medii 8,5-8,99	Cu medii 9-9,49	Cu medii 9,5-9,99	Cu media 10	% 1-4,99	% 5-5,49	% 5,5-5,99	% 6-6,49	% 6,5-6,99	% 7-7,49	% 7,5-7,99	% 8-8,49	% 8,5-8,99	% 9-9,49	% 9,5-9,99	% 10	% 5-10	Județ
AB	2,460	2,403	490	118	173	168	187	183	207	200	257	221	194	5	20.4%	4.9%	7.2%	7.0%	7.8%	7.6%	8.6%	8.3%	10.7%	9.2%	8.1%	0.2%	79.6%	AB
AG	4,653	4,556	987	245	250	261	331	321	358	419	483	524	360	17	21.7%	5.4%	5.5%	5.7%	7.3%	7.0%	7.9%	9.2%	10.6%	11.5%	7.9%	0.4%	78.3%	AG
AR	3,060	2,957	839	198	235	220	231	197	233	236	218	210	139	1	28.4%	6.7%	7.9%	7.4%	7.8%	6.7%	7.9%	8.0%	7.4%	7.1%	4.7%	0.0%	71.6%	AR
B	11,598	11,542	1,238	420	517	558	674	812	957	1,103	1,360	1,741	2,050	112	10.7%	3.6%	4.5%	4.8%	5.8%	7.0%	8.3%	9.6%	11.8%	15.1%	17.8%	1.0%	89.3%	B
BC	4,935	4,679	1,091	328	373	359	347	346	394	345	394	399	284	19	23.3%	7.0%	8.0%	7.7%	7.4%	7.4%	8.4%	7.4%	8.4%	8.5%	6.1%	0.4%	76.7%	BC
BH	4,214	4,087	1,134	271	280	282	326	333	337	321	310	269	219	5	27.7%	6.6%	6.9%	6.9%	8.0%	8.1%	8.2%	7.9%	7.6%	6.6%	5.4%	0.1%	72.3%	BH
BN	2,410	2,343	498	168	199	181	192	189	185	201	208	181	135	6	21.3%	7.2%	8.5%	7.7%	8.2%	8.1%	7.9%	8.6%	8.9%	7.7%	5.8%	0.3%	78.7%	BN
BR	1,758	1,743	131	84	87	135	150	166	177	199	198	228	176	12	7.5%	4.8%	5.0%	7.7%	8.6%	9.5%	10.2%	11.4%	11.4%	13.1%	10.1%	0.7%	92.5%	BR
BT	3,736	3,650	965	300	272	288	261	299	252	278	271	251	203	10	26.4%	8.2%	7.5%	7.9%	7.2%	8.2%	6.9%	7.6%	7.4%	6.9%	5.6%	0.3%	73.6%	BT
BV	3,597	3,470	697	171	190	203	256	263	293	314	348	411	308	16	20.1%	4.9%	5.5%	5.9%	7.4%	7.6%	8.4%	9.0%	10.0%	11.8%	8.9%	0.5%	79.9%	BV
BZ	3,187	3,062	709	173	176	224	227	234	252	256	280	295	212	24	23.2%	5.6%	5.7%	7.3%	7.4%	7.6%	8.2%	8.4%	9.1%	9.6%	6.9%	0.8%	76.8%	BZ
CJ	4,012	3,942	393	158	218	227	306	343	347	432	507	553	437	21	10.0%	4.0%	5.5%	5.8%	7.8%	8.7%	8.8%	11.0%	12.9%	14.0%	11.1%	0.5%	90.0%	CJ
CL	1,945	1,859	517	124	159	166	134	143	125	153	136	112	87	3	27.8%	6.7%	8.6%	8.9%	7.2%	7.7%	6.7%	8.2%	7.3%	6.0%	4.7%	0.2%	72.2%	CL
CS	1,967	1,912	580	128	150	138	179	149	124	136	127	121	80	0	30.3%	6.7%	7.8%	7.2%	9.4%	7.8%	6.5%	7.1%	6.6%	6.3%	4.2%	0.0%	69.7%	CS
CT	5,209	5,125	1,356	290	311	341	321	342	348	421	507	473	406	9	26.5%	5.7%	6.1%	6.7%	6.3%	6.7%	6.8%	8.2%	9.9%	9.2%	7.9%	0.2%	73.5%	CT
CV	1,488	1,447	408	105	127	124	146	129	125	119	100	49	15	0	28.2%	7.3%	8.8%	8.6%	10.1%	8.9%	8.6%	8.2%	6.9%	3.4%	1.0%	0.0%	71.8%	CV
DB	3,681	3,565	894	231	226	235	273	263	287	298	310	322	215	11	25.1%	6.5%	6.3%	6.6%	7.7%	7.4%	8.1%	8.4%	8.7%	9.0%	6.0%	0.3%	74.9%	DB
DJ	4,357	4,182	1,250	211	237	229	238	256	276	303	379	420	372	11	29.9%	5.0%	5.7%	5.5%	5.7%	6.1%	6.6%	7.2%	9.1%	10.0%	8.9%	0.3%	70.1%	DJ
GJ	2,961	2,879	702	185	216	237	193	218	222	242	249	241	164	10	24.4%	6.4%	7.5%	8.2%	6.7%	7.6%	7.7%	8.4%	8.6%	8.4%	5.7%	0.3%	75.6%	GJ
GL	3,570	3,522	507	183	214	240	258	263	306	373	382	463	331	2	14.4%	5.2%	6.1%	6.8%	7.3%	7.5%	8.7%	10.6%	10.8%	13.1%	9.4%	0.1%	85.6%	GL
GR	2,158	2,089	813	170	148	129	131	140	130	111	127	125	60	5	38.9%	8.1%	7.1%	6.2%	6.3%	6.7%	6.2%	5.3%	6.1%	6.0%	2.9%	0.2%	61.1%	GR
HD	2,826	2,662	632	152	174	206	191	222	241	235	226	206	170	7	23.7%	5.7%	6.5%	7.7%	7.2%	8.3%	9.1%	8.8%	8.5%	7.7%	6.4%	0.3%	76.3%	HD
HR	2,622	2,577	828	211	211	211	210	239	211	193	163	83	17	0	32.1%	8.2%	8.2%	8.2%	8.1%	9.3%	8.2%	7.5%	6.3%	3.2%	0.7%	0.0%	67.9%	HR
IF	2,241	2,206	509	154	161	165	175	189	171	189	192	170	120	11	23.1%	7.0%	7.3%	7.5%	7.9%	8.6%	7.8%	8.6%	8.7%	7.7%	5.4%	0.5%	76.9%	IF
IL	1,937	1,895	547	132	127	140	157	140	122	131	148	145	100	6	28.9%	7.0%	6.7%	7.4%	8.3%	7.4%	6.4%	6.9%	7.8%	7.7%	5.3%	0.3%	71.1%	IL
IS	6,106	5,931	932	402	464	450	479	452	485	522	517	599	591	38	15.7%	6.8%	7.8%	7.6%	8.1%	7.6%	8.2%	8.8%	8.7%	10.1%	10.0%	0.6%	84.3%	IS
MH	1,806	1,758	560	123	127	126	127	120	144	110	137	122	62	0	31.9%	7.0%	7.2%	7.2%	7.2%	6.8%	8.2%	6.3%	7.8%	6.9%	3.5%	0.0%	68.1%	MH
MM	3,882	3,645	956	239	230	274	282	284	262	287	312	281	212	26	26.2%	6.6%	6.3%	7.5%	7.7%	7.8%	7.2%	7.9%	8.6%	7.7%	5.8%	0.7%	73.8%	MM
MS	3,936	3,760	909	242	272	299	291	301	291	315	313	299	215	13	24.2%	6.4%	7.2%	8.0%	7.7%	8.0%	7.7%	8.4%	8.3%	8.0%	5.7%	0.3%	75.8%	MS
NT	4,123	4,073	1,171	266	280	294	278	294	299	310	320	321	233	7	28.8%	6.5%	6.9%	7.2%	6.8%	7.2%	7.3%	7.6%	7.9%	7.9%	5.7%	0.2%	71.2%	NT
OT	2,743	2,642	557	146	172	165	202	228	215	222	261	239	225	10	21.1%	5.5%	6.5%	6.2%	7.6%	8.6%	8.1%	8.4%	9.9%	9.0%	8.5%	0.4%	78.9%	OT
PH	5,183	5,084	631	236	294	335	383	434	492	537	627	668	437	10	12.4%	4.6%	5.8%	6.6%	7.5%	8.5%	9.7%	10.6%	12.3%	13.1%	8.6%	0.2%	87.6%	PH
SB	2,867	2,602	559	151	170	182	192	208	232	236	281	299	92	0	21.5%	5.8%	6.5%	7.0%	7.4%	8.0%	8.9%	9.1%	10.8%	11.5%	3.5%	0.0%	78.5%	SB
SJ	1,896	1,804	446	127	134	121	144	152	131	165	154	150	79	1	24.7%	7.0%	7.4%	6.7%	8.0%	8.4%	7.3%	9.1%	8.5%	8.3%	4.4%	0.1%	75.3%	SJ
SM	2,546	2,415	733	190	173	173	187	191	179	187	185	137	78	2	30.4%	7.9%	7.2%	7.2%	7.7%	7.9%	7.4%	7.7%	7.7%	5.7%	3.2%	0.1%	69.6%	SM
SV	6,188	6,044	1,509	451	472	467	500	465	455	471	462	446	337	9	25.0%	7.5%	7.8%	7.7%	8.3%	7.7%	7.5%	7.8%	7.6%	7.4%	5.6%	0.1%	75.0%	SV
TL	1,512	1,479	418	119	102	112	110	93	113	123	132	106	49	2	28.3%	8.0%	6.9%	7.6%	7.4%	6.3%	7.6%	8.3%	8.9%	7.2%	3.3%	0.1%	71.7%	TL
TM	4,308	4,225	1,174	266	260	298	290	296	317	330	348	373	271	2	27.8%	6.3%	6.2%	7.1%	6.9%	7.0%	7.5%	7.8%	8.2%	8.8%	6.4%	0.0%	72.2%	TM
TR	2,379	2,275	831	171	164	142	149	137	143	136	143	151	99	9	36.5%	7.5%	7.2%	6.2%	6.5%	6.0%	6.3%	6.0%	6.3%	6.6%	4.4%	0.4%	63.5%	TR
VL	2,720	2,654	585	161	182	176	191	204	212	232	245	238	218	10	22.0%	6.1%	6.9%	6.6%	7.2%	7.7%	8.0%	8.7%	9.2%	9.0%	8.2%	0.4%	78.0%	VL
VN	2,618	2,510	756	170	159	186	163	175	153	172	195	187	171	23	30.1%	6.8%	6.3%	7.4%	6.5%	7.0%	6.1%	6.9%	7.8%	7.5%	6.8%	0.9%	69.9%	VN
VS	3,534	3,457	976	303	268	268	250	238	267	246	235	237	157	12	28.2%	8.8%	7.8%	7.8%	7.2%	6.9%	7.7%	7.1%	6.8%	6.9%	4.5%	0.3%	71.8%	VS
TOTAL	144,929	140,712	32,418	8,673	9,354	9,735	10,312	10,651	11,070	11,809	12,747	13,066	10,380	497	23.0%	6.2%	6.6%	6.9%	7.3%	7.6%	7.9%	8.4%	9.1%	9.3%	7.4%	0.4%	77.0%	TOTAL

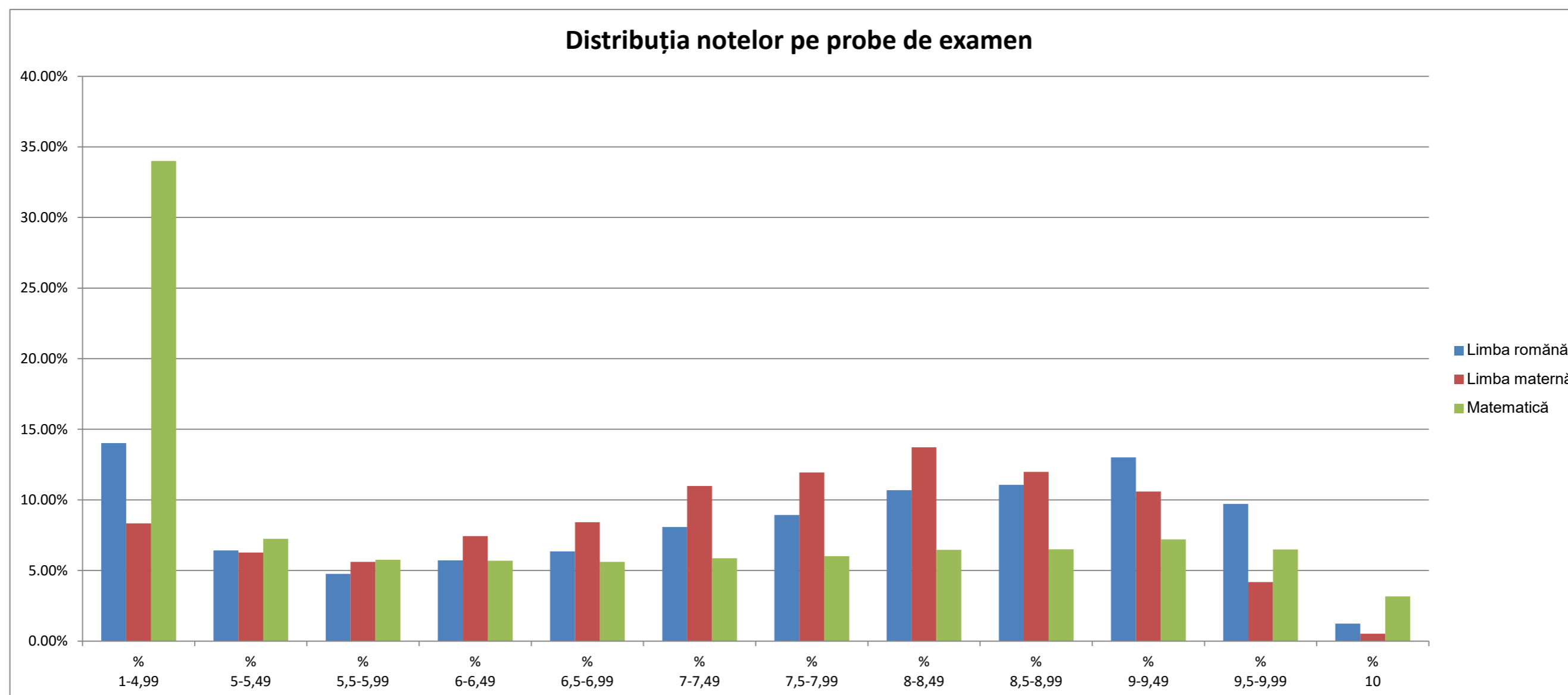
Distribuția mediilor pe mediu și sex												
Mediu	% 1-4,99	% 5-5,49	% 5,5-5,99	% 6-6,49	% 6,5-6,99	% 7-7,49	% 7,5-7,99	% 8-8,49	% 8,5-8,99	% 9-9,49	% 9,5-9,99	% 10
Urban	13.68%	4.59%	5.15%	5.89%	6.83%	7.62%	8.72%	10.12%	11.73%	13.31%	11.76%	0.60%
Rural	35.23%	8.21%	8.60%	8.26%	7.97%	7.51%	6.76%	6.14%	5.58%	4.04%	1.67%	0.04%
Sex	% 1-4,99	% 5-5,49	% 5,5-5,99	% 6-6,49	% 6,5-6,99	% 7-7,49	% 7,5-7,99	% 8-8,49	% 8,5-8,99	% 9-9,49	% 9,5-9,99	% 10
Fete	17.43%	5.64%	6.52%	6.87%	7.57%	8.09%	8.44%	9.19%	10.01%	10.63%	9.13%	0.48%
Băieți	29.04%	6.72%	6.78%	6.97%	7.07%	7.02%	7.25%	7.54%	8.04%	7.85%	5.50%	0.21%



Distribuția mediilor - situație comparativă 2011-2017																								
An	% 1-4,99	% 5-5,49	% 5,5-5,99	% 6-6,49	% 6,5-6,99	% 7-7,49	% 7,5-7,99	% 8-8,49	% 8,5-8,99	% 9-9,49	% 9,5-9,99	% 10	Cu medii 1-4,99	Cu medii 5-5,49	Cu medii 5,5-5,99	Cu medii 6-6,49	Cu medii 6,5-6,99	Cu medii 7-7,49	Cu medii 7,5-7,99	Cu medii 8-8,49	Cu medii 8,5-8,99	Cu medii 9-9,49	Cu medii 9,5-9,99	Cu media 10
2011	18.21%	8.86%	10.15%	10.84%	10.52%	9.69%	8.51%	7.49%	6.48%	5.59%	3.45%	0.20%	38,897	18,931	21,685	23,166	22,463	20,695	18,189	16,004	13,835	11,946	7,375	434
2012	33.88%	8.04%	8.13%	7.84%	7.60%	6.93%	6.47%	6.06%	5.72%	5.26%	3.82%	0.25%	56,607	13,431	13,588	13,106	12,696	11,586	10,813	10,130	9,566	8,782	6,383	412
2013	24.11%	6.78%	6.79%	6.77%	6.57%	6.68%	6.87%	7.56%	8.79%	9.97%	8.59%	0.53%	39,137	11,001	11,022	10,992	10,662	10,843	11,159	12,275	14,265	16,179	13,940	856
2014	28.93%	7.34%	7.50%	7.46%	7.64%	7.81%	7.89%	7.81%	7.30%	6.31%	3.88%	0.14%	46,290	11,742	11,997	11,937	12,223	12,491	12,623	12,504	11,674	10,102	6,203	225
2015	20.64%	6.84%	7.46%	7.71%	7.78%	7.76%	7.78%	8.22%	9.01%	9.46%	7.05%	0.29%	32,736	10,846	11,836	12,233	12,336	12,303	12,340	13,030	14,283	15,003	11,174	456
2016	24.98%	6.95%	7.26%	7.48%	7.74%	8.00%	8.50%	9.10%	8.90%	6.94%	3.97%	0.16%	37,137	10,325	10,788	11,126	11,509	11,896	12,638	13,533	13,229	10,321	5,904	241
2017	23.04%	6.16%	6.65%	6.92%	7.33%	7.57%	7.87%	8.39%	9.06%	9.29%	7.38%	0.35%	32,418	8,673	9,354	9,735	10,312	10,651	11,070	11,809	12,747	13,066	10,380	497



Distribuția notelor pe probe de examen												
Proba	% 1-4,99	% 5-5,49	% 5,5-5,99	% 6-6,49	% 6,5-6,99	% 7-7,49	% 7,5-7,99	% 8-8,49	% 8,5-8,99	% 9-9,49	% 9,5-9,99	% 10
Limba română	14.03%	6.42%	4.76%	5.72%	6.35%	8.08%	8.93%	10.69%	11.06%	13.01%	9.71%	1.24%
Limba maternă	8.33%	6.28%	5.61%	7.43%	8.42%	10.98%	11.94%	13.72%	11.99%	10.59%	4.18%	0.52%
Matematică	33.99%	7.24%	5.76%	5.69%	5.61%	5.86%	6.02%	6.45%	6.50%	7.21%	6.49%	3.16%



Rezultatele la limba română

Județ	Candidați înscrși	Candidați evaluați Română	Cu note 1-4,99	Cu note 5-5,49	Cu note 5,5-5,99	Cu note 6-6,49	Cu note 6,5-6,99	Cu note 7-7,49	Cu note 7,5-7,99	Cu note 8-8,49	Cu note 8,5-8,99	Cu note 9-9,49	Cu note 9,5-9,99	Cu nota 10	% 1-4,99	% 5-5,49	% 5,5-5,99	% 6-6,49	% 6,5-6,99	% 7-7,49	% 7,5-7,99	% 8-8,49	% 8,5-8,99	% 9-9,49	% 9,5-9,99	% 10	Județ
AB	2,460	2,407	298	146	106	132	145	205	224	286	270	361	222	12	12.4%	6.1%	4.4%	5.5%	6.0%	8.5%	9.3%	11.9%	11.2%	15.0%	9.2%	0.5%	AB
AG	4,653	4,565	615	245	195	206	252	337	362	483	552	715	514	89	13.5%	5.4%	4.3%	4.5%	5.5%	7.4%	7.9%	10.6%	12.1%	15.7%	11.3%	1.9%	AG
AR	3,060	2,969	520	201	143	187	200	224	290	301	300	330	254	19	17.5%	6.8%	4.8%	6.3%	6.7%	7.5%	9.8%	10.1%	10.1%	11.1%	8.6%	0.6%	AR
B	11,598	11,557	634	433	379	454	568	697	999	1,267	1,564	2,212	2,062	289	5.5%	3.7%	3.3%	3.9%	4.9%	6.0%	8.6%	11.0%	13.5%	19.1%	17.8%	2.5%	B
BC	4,935	4,698	585	352	239	337	333	409	433	521	482	568	389	50	12.5%	7.5%	5.1%	7.2%	7.1%	8.7%	9.2%	11.1%	10.3%	12.1%	8.3%	1.1%	BC
BH	4,214	4,097	899	283	222	214	251	325	363	411	376	435	293	25	21.9%	6.9%	5.4%	5.2%	6.1%	7.9%	8.9%	10.0%	9.2%	10.6%	7.2%	0.6%	BH
BN	2,410	2,346	258	143	101	145	166	204	205	237	278	315	261	33	11.0%	6.1%	4.3%	6.2%	7.1%	8.7%	8.7%	10.1%	11.8%	13.4%	11.1%	1.4%	BN
BR	1,758	1,744	40	66	59	93	96	143	184	241	264	286	213	59	2.3%	3.8%	3.4%	5.3%	5.5%	8.2%	10.6%	13.8%	15.1%	16.4%	12.2%	3.4%	BR
BT	3,736	3,658	502	309	211	241	238	326	340	363	409	413	275	31	13.7%	8.4%	5.8%	6.6%	6.5%	8.9%	9.3%	9.9%	11.2%	11.3%	7.5%	0.8%	BT
BV	3,597	3,495	434	206	163	159	206	281	314	378	409	476	427	42	12.4%	5.9%	4.7%	4.5%	5.9%	8.0%	9.0%	10.8%	11.7%	13.6%	12.2%	1.2%	BV
BZ	3,187	3,076	376	203	123	153	190	235	305	337	351	415	301	87	12.2%	6.6%	4.0%	5.0%	6.2%	7.6%	9.9%	11.0%	11.4%	13.5%	9.8%	2.8%	BZ
CJ	4,012	3,945	244	189	142	184	237	289	363	501	516	664	526	90	6.2%	4.8%	3.6%	4.7%	6.0%	7.3%	9.2%	12.7%	13.1%	16.8%	13.3%	2.3%	CJ
CL	1,945	1,867	307	154	110	125	144	153	177	185	190	193	115	14	16.4%	8.2%	5.9%	6.7%	7.7%	8.2%	9.5%	9.9%	10.2%	10.3%	6.2%	0.7%	CL
CS	1,967	1,919	370	128	126	121	159	165	169	216	173	182	107	3	19.3%	6.7%	6.6%	6.3%	8.3%	8.6%	8.8%	11.3%	9.0%	9.5%	5.6%	0.2%	CS
CT	5,209	5,144	857	363	232	252	329	390	430	522	528	724	486	31	16.7%	7.1%	4.5%	4.9%	6.4%	7.6%	8.4%	10.1%	10.3%	14.1%	9.4%	0.6%	CT
CV	1,488	1,453	479	140	100	124	125	116	111	106	85	43	23	1	33.0%	9.6%	6.9%	8.5%	8.6%	8.0%	7.6%	7.3%	5.8%	3.0%	1.6%	0.1%	CV
DB	3,681	3,577	466	239	153	181	199	289	311	376	440	524	361	38	13.0%	6.7%	4.3%	5.1%	5.6%	8.1%	8.7%	10.5%	12.3%	14.6%	10.1%	1.1%	DB
DJ	4,357	4,204	856	251	194	202	236	302	315	372	454	560	427	35	20.4%	6.0%	4.6%	4.8%	5.6%	7.2%	7.5%	8.8%	10.8%	13.3%	10.2%	0.8%	DJ
GJ	2,961	2,884	353	205	138	179	186	238	242	349	340	360	263	31	12.2%	7.1%	4.8%	6.2%	6.4%	8.3%	8.4%	12.1%	11.8%	12.5%	9.1%	1.1%	GJ
GL	3,570	3,528	257	133	151	164	224	285	323	443	488	586	449	25	7.3%	3.8%	4.3%	4.6%	6.3%	8.1%	9.2%	12.6%	13.8%	16.6%	12.7%	0.7%	GL
GR	2,158	2,097	491	200	128	145	135	162	141	192	169	195	116	23	23.4%	9.5%	6.1%	6.9%	6.4%	7.7%	6.7%	9.2%	8.1%	9.3%	5.5%	1.1%	GR
HD	2,826	2,671	381	155	126	161	178	213	240	314	271	324	283	25	14.3%	5.8%	4.7%	6.0%	6.7%	8.0%	9.0%	11.8%	10.1%	12.1%	10.6%	0.9%	HD
HR	2,622	2,582	1,024	216	165	233	220	226	162	149	91	72	24	0	39.7%	8.4%	6.4%	9.0%	8.5%	8.8%	6.3%	5.8%	3.5%	2.8%	0.9%	0.0%	HR
IF	2,241	2,209	288	145	131	136	154	212	202	257	242	236	179	28	13.0%	6.6%	5.9%	6.2%	7.0%	9.6%	9.1%	11.6%	11.0%	10.7%	8.1%	1.3%	IF
IL	1,937	1,898	299	158	100	118	144	146	188	212	185	189	142	17	15.8%	8.3%	5.3%	6.2%	7.6%	7.7%	9.9%	11.2%	9.7%	10.0%	7.5%	0.9%	IL
IS	6,106	5,945	459	328	251	359	414	577	571	702	662	816	705	101	7.7%	5.5%	4.2%	6.0%	7.0%	9.7%	9.6%	11.8%	11.1%	13.7%	11.9%	1.7%	IS
MH	1,806	1,762	295	136	101	134	121	146	158	169	205	184	111	2	16.7%	7.7%	5.7%	7.6%	6.9%	8.3%	9.0%	9.6%	11.6%	10.4%	6.3%	0.1%	MH
MM	3,882	3,656	604	236	175	203	228	285	346	365	376	436	333	69	16.5%	6.5%	4.8%	5.6%	6.2%	7.8%	9.5%	10.0%	10.3%	11.9%	9.1%	1.9%	MM
MS	3,936	3,787	669	255	204	237	220	311	347	364	408	398	292	82	17.7%	6.7%	5.4%	6.3%	5.8%	8.2%	9.2%	9.6%	10.8%	10.5%	7.7%	2.2%	MS
NT	4,123	4,074	654	349	226	241	282	386	390	415	389	428	294	20	16.1%	8.6%	5.5%	5.9%	6.9%	9.5%	9.6%	10.2%	9.5%	10.5%	7.2%	0.5%	NT
OT	2,743	2,646	254	154	121	133	131	214	231	286	316	390	370	46	9.6%	5.8%	4.6%	5.0%	5.0%	8.1%	8.7%	10.8%	11.9%	14.7%	14.0%	1.7%	OT
PH	5,183	5,096	295	234	185	239	301	407	521	695	701	881	592	46	5.8%	4.6%	3.6%	4.7%	5.9%	8.0%	10.2%	13.6%	13.8%	17.3%	11.6%	0.9%	PH
SB	2,867	2,616	362	162	132	137	183	243	291	300	370	313	120	3	13.8%	6.2%	5.0%	5.2%	7.0%	9.3%	11.1%	11.5%	14.1%	12.0%	4.6%	0.1%	SB
SJ	1,896	1,808	334	151	92	107	118	150	169	186	159	196	133	14	18.5%	8.3%	5.1%	5.9%	6.5%	8.3%	9.3%	10.3%	8.8%	10.8%	7.4%	0.8%	SJ
SM	2,546	2,422	568	222	137	178	172	217	199	218	200	208	95	8	23.5%	9.2%	5.7%	7.3%	7.1%	9.0%	8.2%	9.0%	8.3%	8.6%	3.9%	0.3%	SM
SV	6,188	6,066	809	441	287	397	416	563	542	650	656	769	481	55	13.3%	7.3%	4.7%	6.5%	6.9%	9.3%	8.9%	10.7%	10.8%	12.7%	7.9%	0.9%	SV
TL	1,512	1,487	216	99	100	99	115	129	150	173	170	148	81	7	14.5%	6.7%	6.7%	6.7%	7.7%	8.7%	10.1%	11.6%	11.4%	10.0%	5.4%	0.5%	TL
TM	4,308	4,236	738	270	214	257	270	348	341	436	441	537	369	15	17.4%	6.4%	5.1%	6.1%	6.4%	8.2%	8.1%	10.3%	10.4%	12.7%	8.7%	0.4%	TM
TR	2,379	2,279	513	158	124	126	132	161	176	208	227	240	193	21	22.5%	6.9%	5.4%	5.5%	5.8%	7.1%	7.7%	9.1%	10.0%	10.5%	8.5%	0.9%	TR
VL	2,720	2,656	287	170	115	165	168	207	252	300	309	371	286	26	10.8%	6.4%	4.3%	6.2%	6.3%	7.8%	9.5%	11.3%	11.6%	14.0%	10.8%	1.0%	VL
VN	2,618	2,515	382	198	127	185	136	201	213	235	257	299	209	73	15.2%	7.9%	5.0%	7.4%	5.4%	8.0%	8.5%	9.3%	10.2%	11.9%	8.3%	2.9%	VN
VS	3,534	3,460	518	236	193	229	233	285	313	366	336	368	323	60	15.0%	6.8%	5.6%	6.6%	6.7%	8.2%	9.0%	10.6%	9.7%	10.6%	9.3%	1.7%	VS
TOTAL	144,929	141,101	19,790	9,062	6,721	8,072	8,955	11,402	12,603	15,087	15,609	18,360	13,699	1,745	14.0%	6.4%	4.8%	5.7%	6.3%	8.1%	8.9%	10.7%	11.1%	13.0%	9.7%	1.2%	TOTAL

Rezultatele la matematică

Județ	Candidați înscrși	Candidați evaluați Matematică	Cu note 1-4,99	Cu note 5-5,49	Cu note 5,5-5,99	Cu note 6-6,49	Cu note 6,5-6,99	Cu note 7-7,49	Cu note 7,5-7,99	Cu note 8-8,49	Cu note 8,5-8,99	Cu note 9-9,49	Cu note 9,5-9,99	Cu nota 10	% 1-4,99	% 5-5,49	% 5,5-5,99	% 6-6,49	% 6,5-6,99	% 7-7,49	% 7,5-7,99	% 8-8,49	% 8,5-8,99	% 9-9,49	% 9,5-9,99	% 10	Județ
AB	2,460	2,403	711	181	142	143	151	138	175	168	152	162	168	112	29.6%	7.5%	5.9%	6.0%	6.3%	5.7%	7.3%	7.0%	6.3%	6.7%	7.0%	4.7%	AB
AG	4,653	4,556	1,390	303	253	249	267	287	291	322	345	382	316	151	30.5%	6.7%	5.6%	5.5%	5.9%	6.3%	6.4%	7.1%	7.6%	8.4%	6.9%	3.3%	AG
AR	3,060	2,957	1,255	216	186	161	142	189	165	149	166	157	125	46	42.4%	7.3%	6.3%	5.4%	4.8%	6.4%	5.6%	5.0%	5.6%	5.3%	4.2%	1.6%	AR
B	11,598	11,542	1,933	579	510	570	597	724	782	892	1,043	1,338	1,600	974	16.7%	5.0%	4.4%	4.9%	5.2%	6.3%	6.8%	7.7%	9.0%	11.6%	13.9%	8.4%	B
BC	4,935	4,679	1,618	407	283	262	306	266	284	265	266	346	259	117	34.6%	8.7%	6.0%	5.6%	6.5%	5.7%	6.1%	5.7%	5.7%	7.4%	5.5%	2.5%	BC
BH	4,214	4,090	1,559	292	261	247	247	251	249	252	221	246	188	77	38.1%	7.1%	6.4%	6.0%	6.0%	6.1%	6.1%	6.2%	5.4%	6.0%	4.6%	1.9%	BH
BN	2,410	2,343	881	201	147	145	137	139	137	147	137	116	113	43	37.6%	8.6%	6.3%	6.2%	5.8%	5.9%	5.8%	6.3%	5.8%	5.0%	4.8%	1.8%	BN
BR	1,758	1,743	292	122	116	124	133	127	146	130	158	180	152	63	16.8%	7.0%	6.7%	7.1%	7.6%	7.3%	8.4%	7.5%	9.1%	10.3%	8.7%	3.6%	BR
BT	3,736	3,650	1,417	321	243	226	208	210	180	185	200	198	167	95	38.8%	8.8%	6.7%	6.2%	5.7%	5.8%	4.9%	5.1%	5.5%	5.4%	4.6%	2.6%	BT
BV	3,597	3,470	1,003	198	188	188	201	222	219	247	259	328	305	112	28.9%	5.7%	5.4%	5.4%	5.8%	6.4%	6.3%	7.1%	7.5%	9.5%	8.8%	3.2%	BV
BZ	3,187	3,062	1,051	213	188	187	167	175	176	202	229	220	169	85	34.3%	7.0%	6.1%	6.1%	5.5%	5.7%	5.7%	6.6%	7.5%	7.2%	5.5%	2.8%	BZ
CJ	4,012	3,942	629	274	230	246	214	285	306	339	375	475	376	193	16.0%	7.0%	5.8%	6.2%	5.4%	7.2%	7.8%	8.6%	9.5%	12.0%	9.5%	4.9%	CJ
CL	1,945	1,858	747	162	125	114	109	103	90	117	94	84	76	38	40.2%	8.7%	6.7%	6.1%	5.9%	5.5%	4.8%	6.3%	5.1%	4.5%	4.1%	2.0%	CL
CS	1,967	1,912	796	160	128	122	90	103	103	98	95	100	91	26	41.6%	8.4%	6.7%	6.4%	4.7%	5.4%	5.4%	5.1%	5.0%	5.2%	4.8%	1.4%	CS
CT	5,209	5,125	1,805	354	280	241	263	306	288	371	343	366	336	172	35.2%	6.9%	5.5%	4.7%	5.1%	6.0%	5.6%	7.2%	6.7%	7.1%	6.6%	3.4%	CT
CV	1,488	1,448	568	105	95	98	95	98	103	91	86	67	39	3	39.2%	7.3%	6.6%	6.8%	6.6%	6.8%	7.1%	6.3%	5.9%	4.6%	2.7%	0.2%	CV
DB	3,681	3,565	1,330	328	185	191	196	200	221	209	199	229	184	93	37.3%	9.2%	5.2%	5.4%	5.5%	5.6%	6.2%	5.9%	5.6%	6.4%	5.2%	2.6%	DB
DJ	4,357	4,182	1,629	210	184	192	204	178	241	259	279	315	340	151	39.0%	5.0%	4.4%	4.6%	4.9%	4.3%	5.8%	6.2%	6.7%	7.5%	8.1%	3.6%	DJ
GJ	2,961	2,878	1,064	258	186	159	143	160	176	182	169	178	135	69	37.0%	9.0%	6.5%	5.5%	5.0%	5.6%	6.1%	6.3%	5.9%	6.2%	4.7%	2.4%	GJ
GL	3,570	3,522	894	219	190	203	207	220	253	282	306	329	292	127	25.4%	6.2%	5.4%	5.8%	5.9%	6.2%	7.2%	8.0%	8.7%	9.3%	8.3%	3.6%	GL
GR	2,158	2,089	1,061	185	100	110	103	93	94	84	91	87	52	29	50.8%	8.9%	4.8%	5.3%	4.9%	4.5%	4.5%	4.0%	4.4%	4.2%	2.5%	1.4%	GR
HD	2,826	2,662	925	199	173	161	162	174	167	179	157	175	140	50	34.7%	7.5%	6.5%	6.0%	6.1%	6.5%	6.3%	6.7%	5.9%	6.6%	5.3%	1.9%	HD
HR	2,622	2,581	1,076	221	171	175	147	154	140	164	128	110	67	28	41.7%	8.6%	6.6%	6.8%	5.7%	6.0%	5.4%	6.4%	5.0%	4.3%	2.6%	1.1%	HR
IF	2,241	2,206	748	176	149	140	134	148	136	128	139	145	102	61	33.9%	8.0%	6.8%	6.3%	6.1%	6.7%	6.2%	5.8%	6.3%	6.6%	4.6%	2.8%	IF
IL	1,937	1,895	761	160	96	124	106	93	98	111	101	115	84	46	40.2%	8.4%	5.1%	6.5%	5.6%	4.9%	5.2%	5.9%	5.3%	6.1%	4.4%	2.4%	IL
IS	6,106	5,931	1,661	480	357	371	347	392	359	379	334	490	473	288	28.0%	8.1%	6.0%	6.3%	5.9%	6.6%	6.1%	6.4%	5.6%	8.3%	8.0%	4.9%	IS
MH	1,806	1,758	812	115	95	88	101	87	94	90	99	84	68	25	46.2%	6.5%	5.4%	5.0%	5.7%	4.9%	5.3%	5.1%	5.6%	4.8%	3.9%	1.4%	MH
MM	3,882	3,645	1,408	262	233	204	215	206	206	210	225	203	168	105	38.6%	7.2%	6.4%	5.6%	5.9%	5.7%	5.7%	5.8%	6.2%	5.6%	4.6%	2.9%	MM
MS	3,936	3,762	1,478	269	247	200	200	189	214	255	207	227	190	86	39.3%	7.2%	6.6%	5.3%	5.3%	5.0%	5.7%	6.8%	5.5%	6.0%	5.1%	2.3%	MS
NT	4,123	4,073	1,636	270	232	208	206	226	219	259	239	227	231	120	40.2%	6.6%	5.7%	5.1%	5.1%	5.5%	5.4%	6.4%	5.9%	5.6%	5.7%	2.9%	NT
OT	2,743	2,642	909	165	153	163	158	164	161	187	163	174	160	85	34.4%	6.2%	5.8%	6.2%	6.0%	6.2%	6.1%	7.1%	6.2%	6.6%	6.1%	3.2%	OT
PH	5,183	5,084	1,056	352	305	303	316	359	387	460	426	510	455	155	20.8%	6.9%	6.0%	6.0%	6.2%	7.1%	7.6%	9.0%	8.4%	10.0%	8.9%	3.0%	PH
SB	2,867	2,602	788	148	148	156	191	155	148	181	236	226	163	62	30.3%	5.7%	5.7%	6.0%	7.3%	6.0%	5.7%	7.0%	9.1%	8.7%	6.3%	2.4%	SB
SJ	1,896	1,804	640	149	107	119	108	95	106	125	112	125	90	28	35.5%	8.3%	5.9%	6.6%	6.0%	5.3%	5.9%	6.9%	6.2%	6.9%	5.0%	1.6%	SJ
SM	2,546	2,416	979	167	149	154	131	149	148	137	127	121	124	30	40.5%	6.9%	6.2%	6.4%	5.4%	6.2%	6.1%	5.7%	5.3%	5.0%	5.1%	1.2%	SM
SV	6,188	6,044	2,341	561	383	366	347	326	318	300	327	359	276	140	38.7%	9.3%	6.3%	6.1%	5.7%	5.4%	5.3%	5.0%	5.4%	5.9%	4.6%	2.3%	SV
TL	1,512	1,479	626	99	82	79	90	77	85	85	95	103	45	13	42.3%	6.7%	5.5%	5.3%	6.1%	5.2%	5.7%	5.7%	6.4%	7.0%	3.0%	0.9%	TL
TM	4,308	4,227	1,646	274	230	238	222	224	242	250	248	270	281	102	38.9%	6.5%	5.4%	5.6%	5.3%	5.3%	5.7%	5.9%	5.9%	6.4%	6.6%	2.4%	TM
TR	2,379	2,275	1,169	155	116	123	104	99	86	101	95	106	78	43	51.4%	6.8%	5.1%	5.4%	4.6%	4.4%	3.8%	4.4%	4.2%	4.7%	3.4%	1.9%	TR
VL	2,720	2,654	885	206	147	143	143	150	187	157	190	174	206	66	33.3%	7.8%	5.5%	5.4%	5.4%	5.7%	7.0%	5.9%	7.2%	6.6%	7.8%	2.5%	VL
VN	2,618	2,510	1,049	236	124	127	119	112	119	139	123	140	131	91	41.8%	9.4%	4.9%	5.1%	4.7%	4.5%	4.7%	5.5%	4.9%	5.6%	5.2%	3.6%	VN
VS	3,534	3,457	1,613	236	192	188	173	200	171	195	162	157	120	50	46.7%	6.8%	5.6%	5.4%	5.0%	5.8%	4.9%	5.6%	4.7%	4.5%	3.5%	1.4%	VS
TOTAL	144,929	140,723	47,839	10,188	8,109	8,008	7,900	8,253	8,470	9,083	9,146	10,144	9,135	4,450	34.0%	7.2%	5.8%	5.7%	5.6%	5.9%	6.0%	6.5%	6.5%	7.2%	6.5%	3.2%	TOTAL

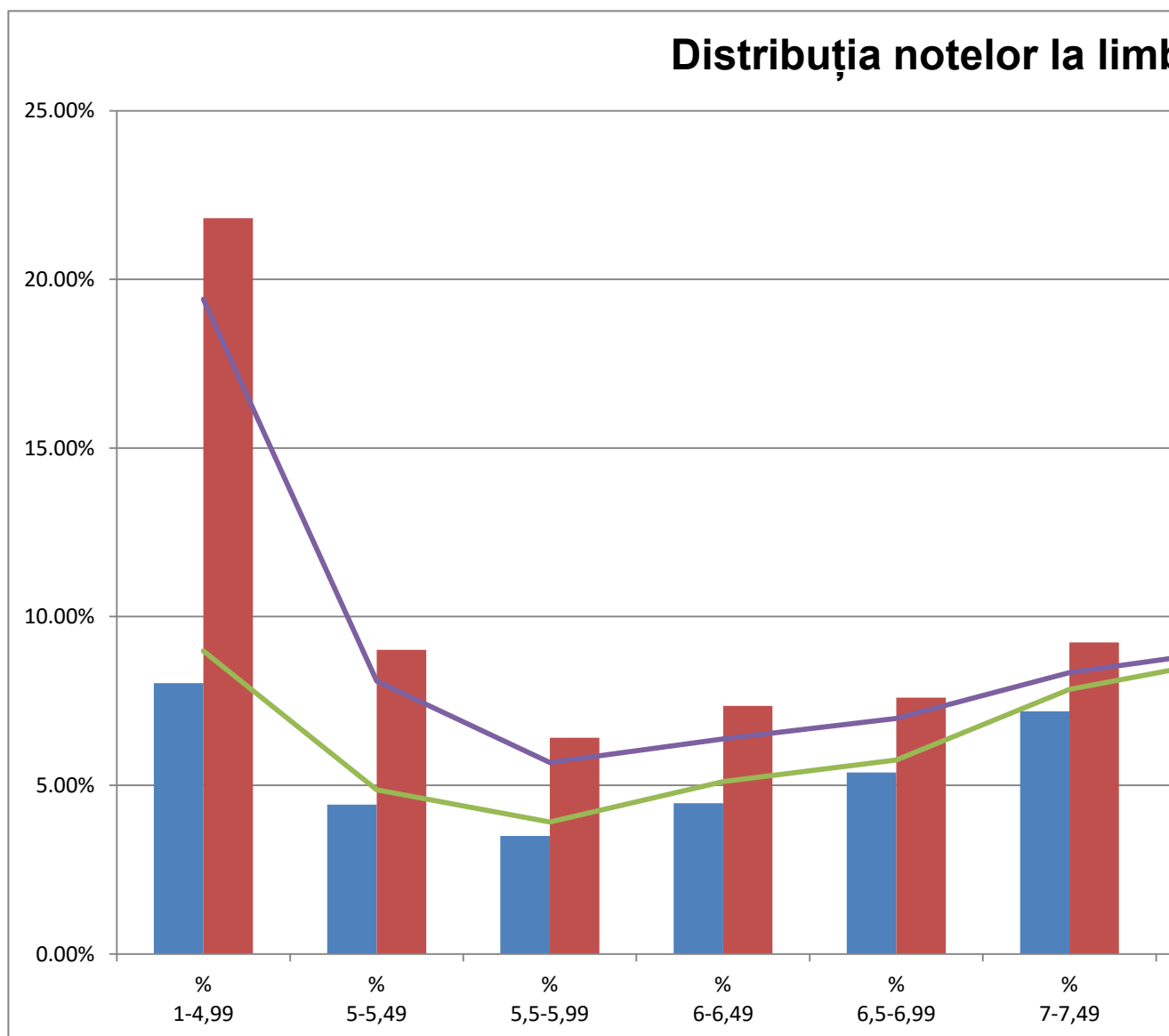
Rezultatele la limba maternă

Județ	Candidați înscriși	Candidați evaluați Maternă	Cu note 1-4,99	Cu note 5-5,49	Cu note 5,5-5,99	Cu note 6-6,49	Cu note 6,5-6,99	Cu note 7-7,49	Cu note 7,5-7,99	Cu note 8-8,49	Cu note 8,5-8,99	Cu note 9-9,49	Cu note 9,5-9,99	Cu nota 10	% 1-4,99	% 5-5,49	% 5,5-5,99	% 6-6,49	% 6,5-6,99	% 7-7,49	% 7,5-7,99	% 8-8,49	% 8,5-8,99	% 9-9,49	% 9,5-9,99	% 10	Județ
AB	77	77	2	5	5	7	4	13	7	20	7	7	0	0	2.6%	6.5%	6.5%	9.1%	5.2%	16.9%	9.1%	26.0%	9.1%	9.1%	0.0%	0.0%	AB
AG	0	0	0	0	0	0	0	0	0	0	0	0	0	0													AG
AR	163	157	23	13	9	12	10	21	18	23	11	14	3	0	14.6%	8.3%	5.7%	7.6%	6.4%	13.4%	11.5%	14.6%	7.0%	8.9%	1.9%	0.0%	AR
B	167	167	2	3	3	9	10	11	22	34	27	34	12	0	1.2%	1.8%	1.8%	5.4%	6.0%	6.6%	13.2%	20.4%	16.2%	20.4%	7.2%	0.0%	B
BC	18	15	0	4	1	0	4	2	1	2	1	0	0	0	0.0%	26.7%	6.7%	0.0%	26.7%	13.3%	6.7%	13.3%	6.7%	0.0%	0.0%	0.0%	BC
BH	782	739	88	53	64	61	76	95	95	83	72	38	13	1	11.9%	7.2%	8.7%	8.3%	10.3%	12.9%	12.9%	11.2%	9.7%	5.1%	1.8%	0.1%	BH
BN	70	69	5	9	1	6	5	11	7	4	12	8	1	0	7.2%	13.0%	1.4%	8.7%	7.2%	15.9%	10.1%	5.8%	17.4%	11.6%	1.4%	0.0%	BN
BR	0	0	0	0	0	0	0	0	0	0	0	0	0	0													BR
BT	0	0	0	0	0	0	0	0	0	0	0	0	0	0													BT
BV	395	393	23	17	18	19	22	32	48	65	64	56	23	6	5.9%	4.3%	4.6%	4.8%	5.6%	8.1%	12.2%	16.5%	16.3%	14.2%	5.9%	1.5%	BV
BZ	0	0	0	0	0	0	0	0	0	0	0	0	0	0													BZ
CJ	520	520	12	9	9	22	36	60	86	87	90	77	31	1	2.3%	1.7%	1.7%	4.2%	6.9%	11.5%	16.5%	16.7%	17.3%	14.8%	6.0%	0.2%	CJ
CL	0	0	0	0	0	0	0	0	0	0	0	0	0	0													CL
CS	21	21	5	1	2	2	0	4	2	2	0	2	1	0	23.8%	4.8%	9.5%	9.5%	0.0%	19.0%	9.5%	9.5%	0.0%	9.5%	4.8%	0.0%	CS
CT	0	0	0	0	0	0	0	0	0	0	0	0	0	0													CT
CV	1,090	1,068	97	65	71	89	100	114	126	142	123	99	39	3	9.1%	6.1%	6.6%	8.3%	9.4%	10.7%	11.8%	13.3%	11.5%	9.3%	3.7%	0.3%	CV
DB	0	0	0	0	0	0	0	0	0	0	0	0	0	0													DB
DJ	0	0	0	0	0	0	0	0	0	0	0	0	0	0													DJ
GJ	0	0	0	0	0	0	0	0	0	0	0	0	0	0													GJ
GL	0	0	0	0	0	0	0	0	0	0	0	0	0	0													GL
GR	0	0	0	0	0	0	0	0	0	0	0	0	0	0													GR
HD	51	50	9	3	4	3	4	3	8	5	5	4	2	0	18.0%	6.0%	8.0%	6.0%	8.0%	6.0%	16.0%	10.0%	10.0%	8.0%	4.0%	0.0%	HD
HR	2,215	2,176	198	134	132	176	196	231	254	263	263	223	97	9	9.1%	6.2%	6.1%	8.1%	9.0%	10.6%	11.7%	12.1%	12.1%	10.2%	4.5%	0.4%	HR
IF	9	9	0	0	0	0	0	2	1	2	2	1	1	0	0.0%	0.0%	0.0%	0.0%	0.0%	22.2%	11.1%	22.2%	22.2%	11.1%	11.1%	0.0%	IF
IL	0	0	0	0	0	0	0	0	0	0	0	0	0	0													IL
IS	0	0	0	0	0	0	0	0	0	0	0	0	0	0													IS
MH	0	0	0	0	0	0	0	0	0	0	0	0	0	0													MH
MM	109	101	7	4	7	4	11	19	13	14	8	12	1	1	6.9%	4.0%	6.9%	4.0%	10.9%	18.8%	12.9%	13.9%	7.9%	11.9%	1.0%	1.0%	MM
MS	1,389	1,362	108	94	74	96	123	160	149	205	152	132	56	13	7.9%	6.9%	5.4%	7.0%	9.0%	11.7%	10.9%	15.1%	11.2%	9.7%	4.1%	1.0%	MS
NT	0	0	0	0	0	0	0	0	0	0	0	0	0	0													NT
OT	0	0	0	0	0	0	0	0	0	0	0	0	0	0													OT
PH	0	0	0	0	0	0	0	0	0	0	0	0	0	0													PH
SB	295	295	20	15	10	13	13	16	22	55	34	58	36	3	6.8%	5.1%	3.4%	4.4%	4.4%	5.4%	7.5%	18.6%	11.5%	19.7%	12.2%	1.0%	SB
SJ	394	377	15	24	13	30	21	55	54	53	48	48	13	3	4.0%	6.4%	3.4%	8.0%	5.6%	14.6%	14.3%	14.1%	12.7%	12.7%	3.4%	0.8%	SJ
SM	716	691	79	67	46	68	65	65	76	79	68	61	14	3	11.4%	9.7%	6.7%	9.8%	9.4%	9.4%	11.0%	11.4%	9.8%	8.8%	2.0%	0.4%	SM
SV	0	0	0	0	0	0	0	0	0	0	0	0	0	0													SV
TL	0	0	0	0	0	0	0	0	0	0	0	0	0	0													TL
TM	176	173	12	11	6	12	12	15	21	23	27	22	11	1	6.9%	6.4%	3.5%	6.9%	6.9%	8.7%	12.1%	13.3%	15.6%	12.7%	6.4%	0.6%	TM
TR	0	0	0	0	0	0	0	0	0	0	0	0	0	0													TR
VL	0	0	0	0	0	0	0	0	0	0	0	0	0	0													VL
VN	0	0	0	0	0	0	0	0	0	0	0	0	0	0													VN
VS	0	0	0	0	0	0	0	0	0	0	0	0	0	0													VS
TOTAL	8,657	8,460	705	531	475	629	712	929	1,010	1,161	1,014	896	354	44	8.3%	6.3%	5.6%	7.4%	8.4%	11.0%	11.9%	13.7%	12.0%	10.6%	4.2%	0.5%	TOTAL

Distribuția notelor la limba română pe mediu și sex

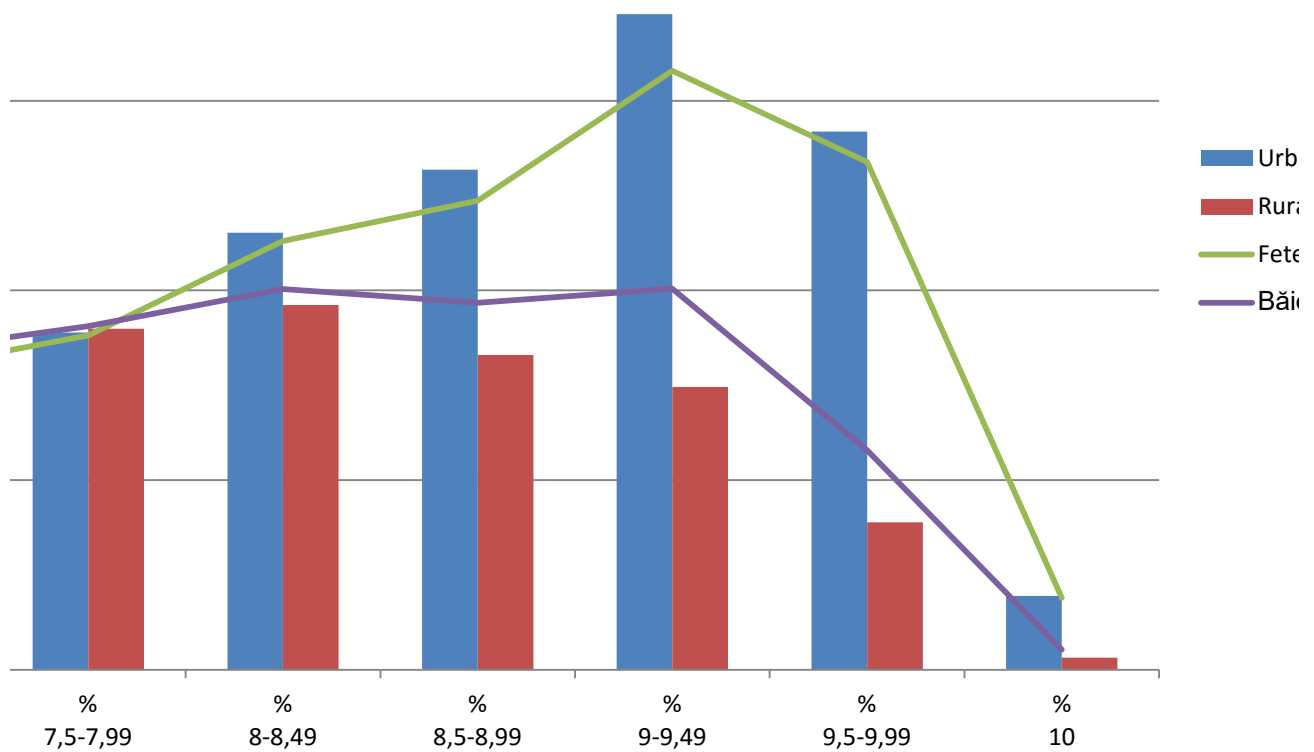
Mediu	% 1-4,99	% 5-5,49	% 5,5-5,99	% 6-6,49	% 6,5-6,99	% 7-7,49	% 7,5-7,99	% 8-8,49	% 8,5-8,99
Urban	8.03%	4.43%	3.50%	4.46%	5.38%	7.19%	8.89%	11.52%	13.19%
Rural	21.82%	9.02%	6.41%	7.35%	7.60%	9.24%	8.99%	9.62%	8.30%
Sex	% 1-4,99	% 5-5,49	% 5,5-5,99	% 6-6,49	% 6,5-6,99	% 7-7,49	% 7,5-7,99	% 8-8,49	% 8,5-8,99
Fete	8.98%	4.86%	3.91%	5.11%	5.75%	7.84%	8.82%	11.30%	12.36%
Băieți	19.41%	8.09%	5.68%	6.38%	6.98%	8.34%	9.05%	10.04%	9.67%

Distribuția notelor la limb



% 9-9,49	% 9,5-9,99	% 10
17.28%	14.19%	1.95%
7.46%	3.88%	0.31%
% 9-9,49	% 9,5-9,99	% 10
15.79%	13.39%	1.90%
10.04%	5.78%	0.53%

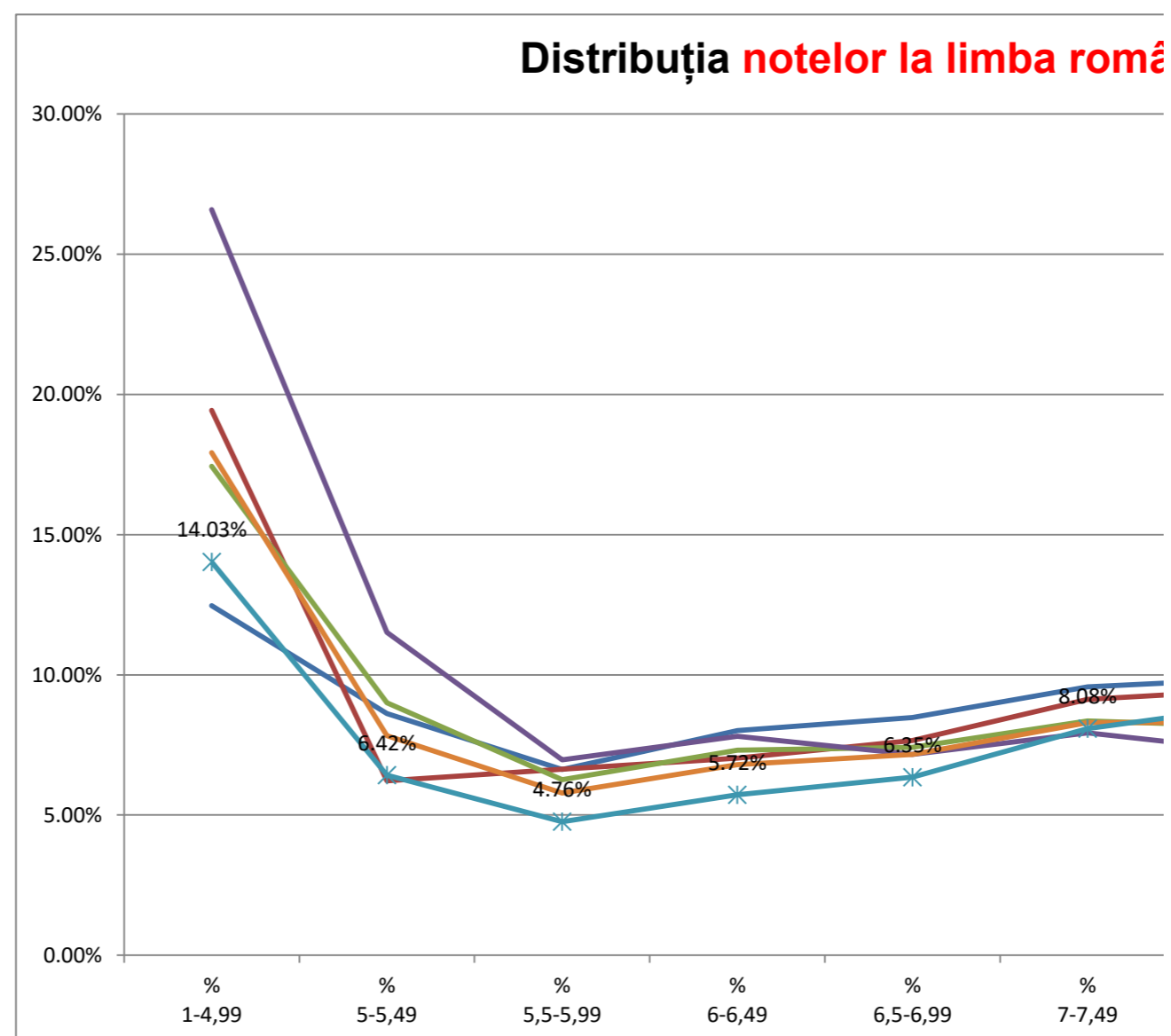
Da română pe mediu și sex



ian
al
e
eți

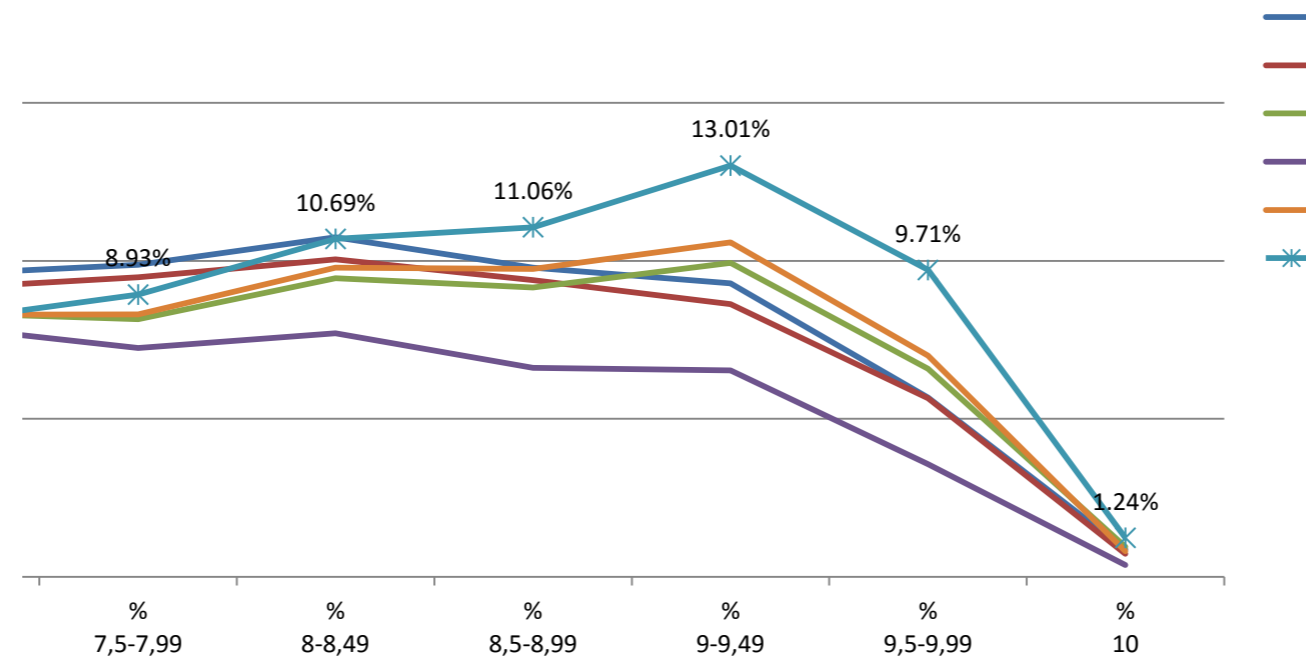
Distribuția notelor la limba română - situație comparativă 2011-2017

An	% 1-4,99	% 5-5,49	% 5,5-5,99	% 6-6,49	% 6,5-6,99	% 7-7,49	% 7,5-7,99	% 8-8,49	% 8,5-8,99	% 9-9,49	% 9,5-9,99
2011	12.47%	8.62%	6.62%	8.01%	8.48%	9.57%	9.87%	10.75%	9.79%	9.29%	5.67%
2012	19.43%	6.22%	6.64%	7.03%	7.66%	9.12%	9.48%	10.05%	9.38%	8.63%	5.65%
2013	17.44%	9.00%	6.26%	7.31%	7.41%	8.36%	8.15%	9.45%	9.15%	9.93%	6.58%
2014	26.59%	11.51%	6.96%	7.81%	7.16%	7.93%	7.24%	7.71%	6.61%	6.53%	3.57%
2015	14.51%	7.98%	5.85%	7.06%	7.50%	9.02%	9.14%	10.78%	10.27%	10.80%	6.38%
2016	17.92%	7.82%	5.78%	6.79%	7.16%	8.30%	8.30%	9.78%	9.75%	10.58%	7.00%
2017	14.03%	6.42%	4.76%	5.72%	6.35%	8.08%	8.93%	10.69%	11.06%	13.01%	9.71%



% 10	Cu note 1-4,99	Cu note 5-5,49	Cu note 5,5-5,99	Cu note 6-6,49	Cu note 6,5-6,99	Cu note 7-7,49	Cu note 7,5-7,99	Cu note 8-8,49	Cu note 8,5-8,99	Cu note 9-9,49	Cu note 9,5-9,99
0.88%	26,636	18,409	14,143	17,103	18,105	20,451	21,083	22,959	20,903	19,840	12,115
0.73%	32,464	10,391	11,091	11,745	12,793	15,243	15,834	16,791	15,679	14,416	9,439
0.95%	28,306	14,615	10,160	11,874	12,032	13,569	13,232	15,336	14,855	16,123	10,679
0.37%	42,542	18,420	11,143	12,496	11,459	12,690	11,589	12,339	10,582	10,447	5,705
0.72%	23,069	12,682	9,299	11,233	11,931	14,339	14,530	17,149	16,326	17,174	10,147
0.81%	26,725	11,667	8,620	10,128	10,683	12,375	12,382	14,584	14,534	15,777	10,440
1.24%	19,790	9,062	6,721	8,072	8,955	11,402	12,603	15,087	15,609	18,360	13,699

înă - situație comparativă 2011-2017

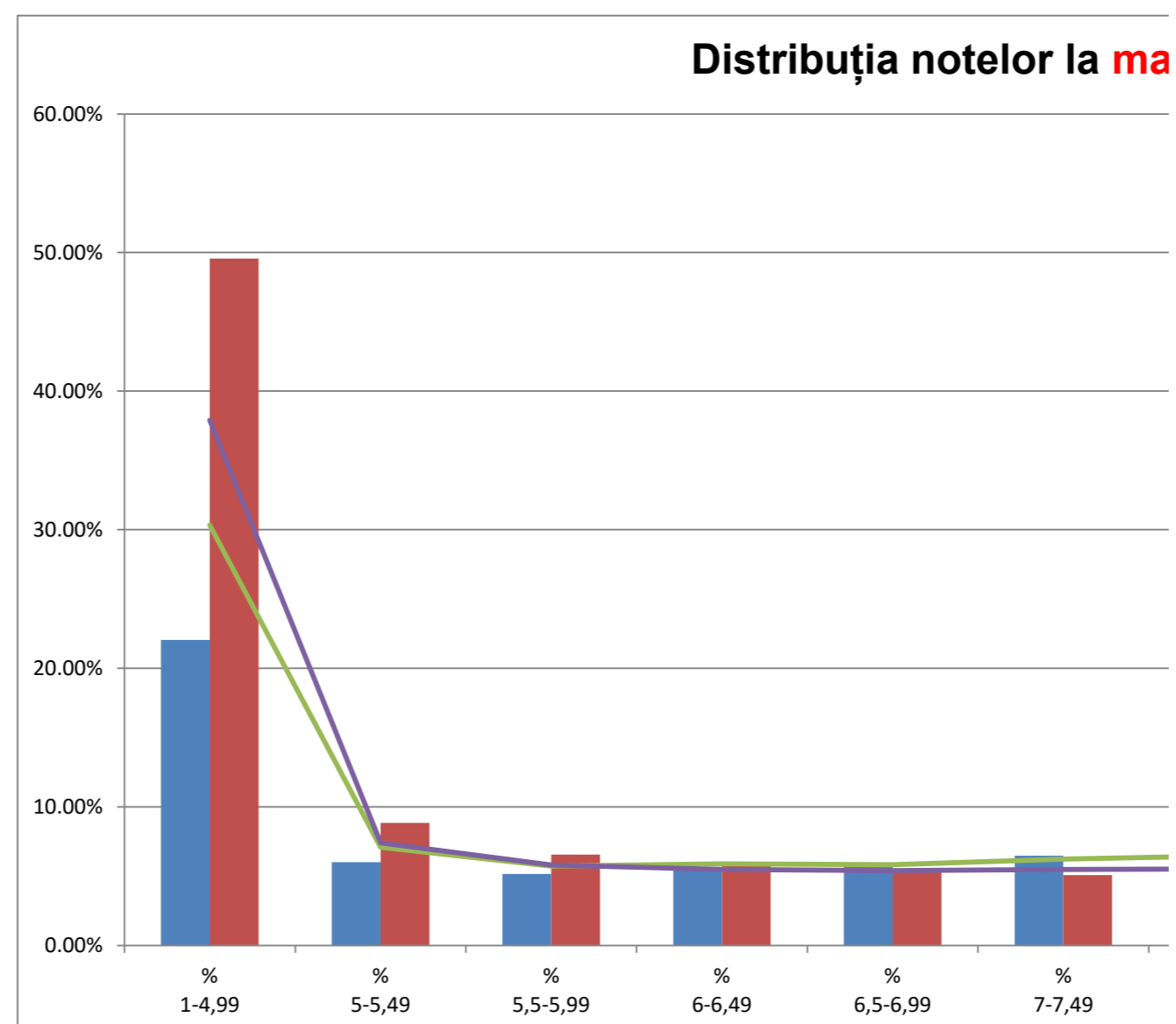


Cu nota 10
1,873
1,214
1,550
599
1,137
1,213
1,745

- 2011
- 2012
- 2013
- 2014
- 2016
- 2017

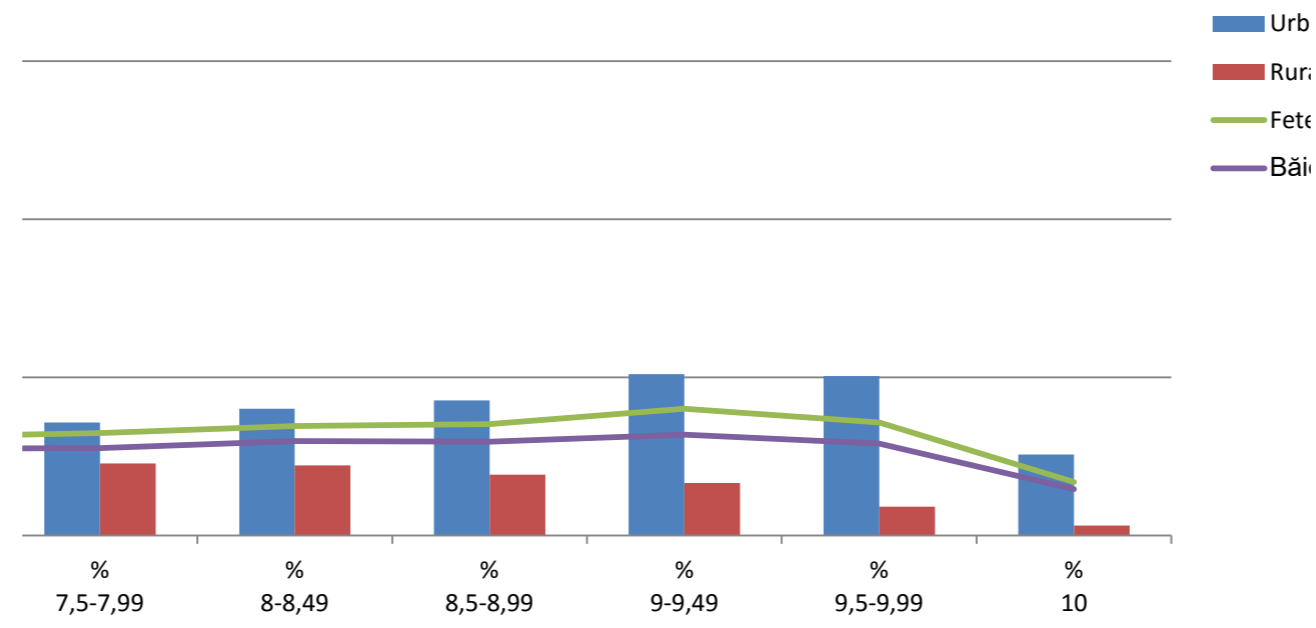
Distribuția notelor la **matematică pe mediu și sex**

Mediu	% 1-4,99	% 5-5,49	% 5,5-5,99	% 6-6,49	% 6,5-6,99	% 7-7,49	% 7,5-7,99	% 8-8,49	% 8,5-8,99
Urban	22.04%	6.01%	5.15%	5.49%	5.77%	6.48%	7.14%	8.01%	8.54%
Rural	49.56%	8.84%	6.56%	5.96%	5.41%	5.07%	4.56%	4.43%	3.85%
Sex	% 1-4,99	% 5-5,49	% 5,5-5,99	% 6-6,49	% 6,5-6,99	% 7-7,49	% 7,5-7,99	% 8-8,49	% 8,5-8,99
Fete	30.33%	7.08%	5.73%	5.88%	5.82%	6.23%	6.48%	6.92%	7.03%
Băieți	37.91%	7.41%	5.80%	5.49%	5.40%	5.48%	5.53%	5.96%	5.93%



% 9-9,49	% 9,5-9,99	% 10
10.19%	10.08%	5.11%
3.32%	1.82%	0.63%
% 9-9,49	% 9,5-9,99	% 10
8.00%	7.13%	3.38%
6.36%	5.81%	2.93%

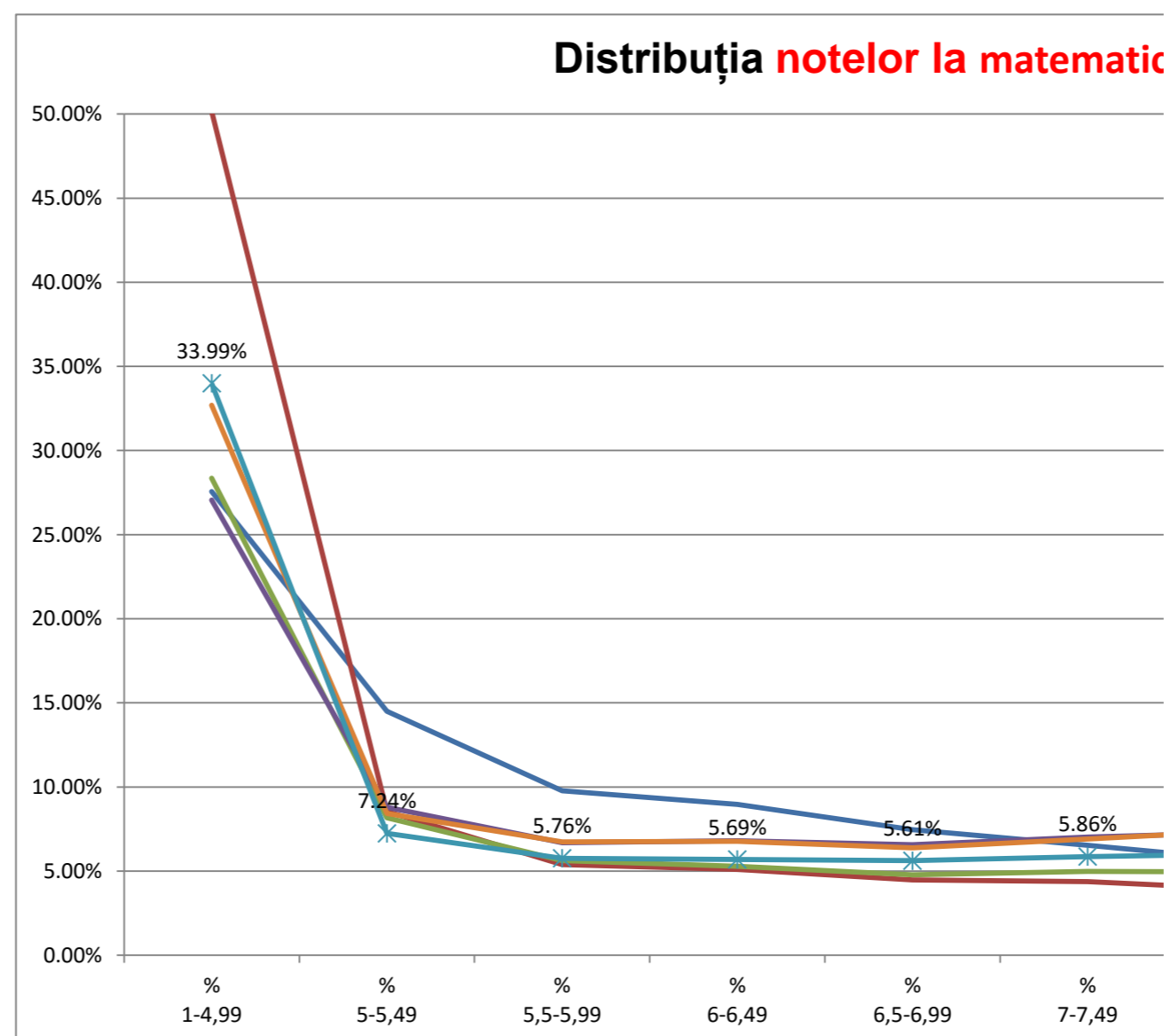
Matematică pe mediu și sex



an
al
e
eți

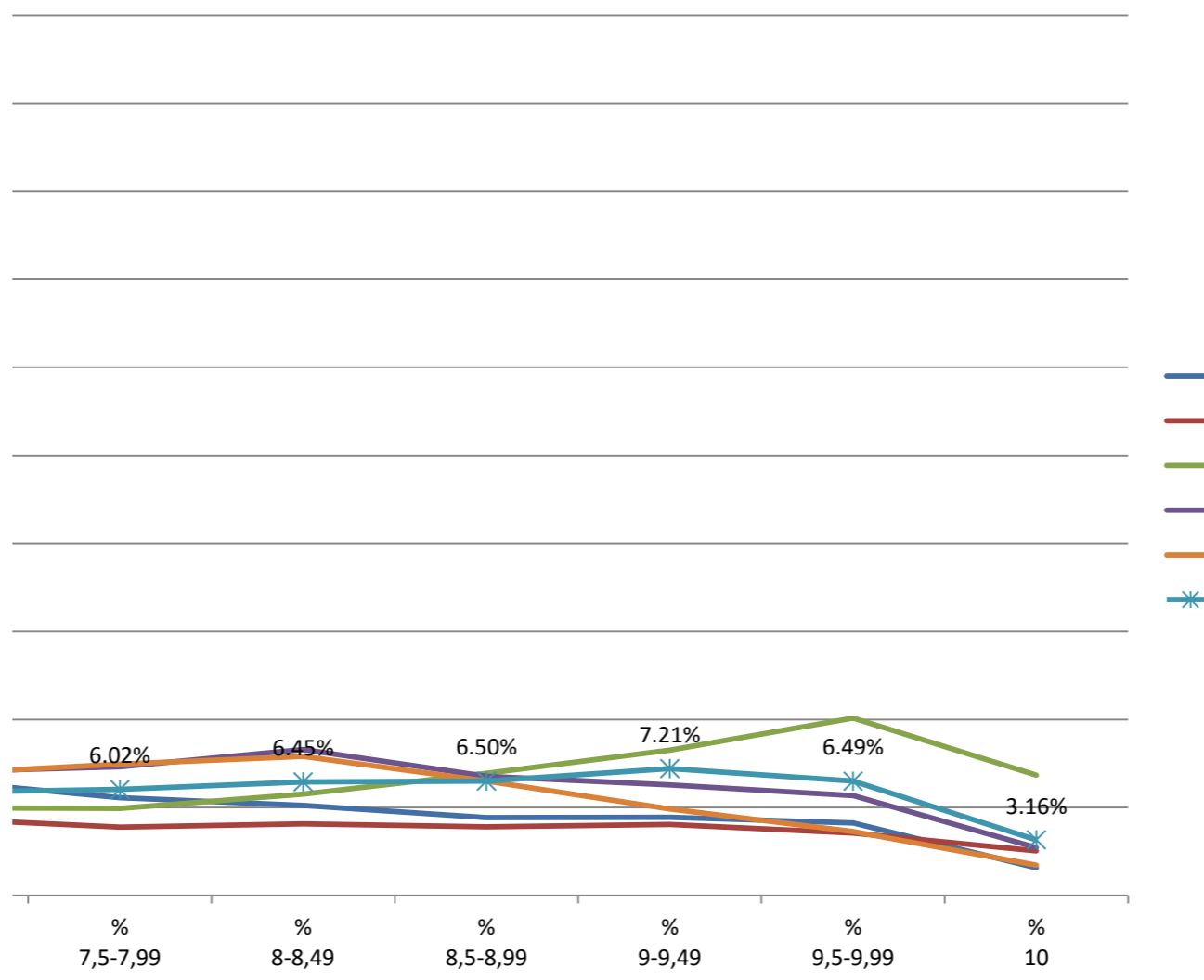
Distribuția notelor la matematică - situație comparativă 2011-2017

An	% 1-4,99	% 5-5,49	% 5,5-5,99	% 6-6,49	% 6,5-6,99	% 7-7,49	% 7,5-7,99	% 8-8,49	% 8,5-8,99	% 9-9,49	% 9,5-9,99
2011	27.57%	14.50%	9.78%	8.96%	7.45%	6.54%	5.55%	5.11%	4.42%	4.44%	4.12%
2012	50.15%	8.54%	5.38%	5.10%	4.47%	4.37%	3.89%	4.07%	3.91%	4.04%	3.55%
2013	28.36%	8.17%	5.62%	5.28%	4.78%	4.98%	4.95%	5.76%	6.93%	8.26%	10.08%
2014	27.05%	8.80%	6.69%	6.81%	6.56%	7.03%	7.31%	8.30%	6.77%	6.28%	5.68%
2015	26.45%	9.32%	7.06%	6.54%	5.79%	5.74%	5.71%	6.50%	6.97%	7.58%	8.65%
2016	32.69%	8.42%	6.74%	6.77%	6.38%	6.90%	7.46%	7.91%	6.50%	4.91%	3.62%
2017	33.99%	7.24%	5.76%	5.69%	5.61%	5.86%	6.02%	6.45%	6.50%	7.21%	6.49%



% 10	Cu note 1-4,99	Cu note 5-5,49	Cu note 5,5-5,99	Cu note 6-6,49	Cu note 6,5-6,99	Cu note 7-7,49	Cu note 7,5-7,99	Cu note 8-8,49	Cu note 8,5-8,99	Cu note 9-9,49	Cu note 9,5-9,99
1.57%	58,890	30,969	20,885	19,135	15,925	13,974	11,851	10,926	9,449	9,478	8,793
2.54%	83,800	14,262	8,990	8,522	7,473	7,308	6,504	6,794	6,529	6,744	5,929
6.83%	46,034	13,258	9,122	8,565	7,757	8,077	8,037	9,358	11,257	13,408	16,366
2.72%	43,287	14,081	10,704	10,898	10,495	11,248	11,704	13,276	10,833	10,042	9,083
3.70%	41,937	14,777	11,197	10,373	9,176	9,101	9,050	10,312	11,050	12,020	13,712
1.72%	48,597	12,509	10,016	10,057	9,482	10,258	11,084	11,752	9,656	7,293	5,387
3.16%	47,839	10,188	8,109	8,008	7,900	8,253	8,470	9,083	9,146	10,144	9,135

3.ă - situație comparativă 2011-2017

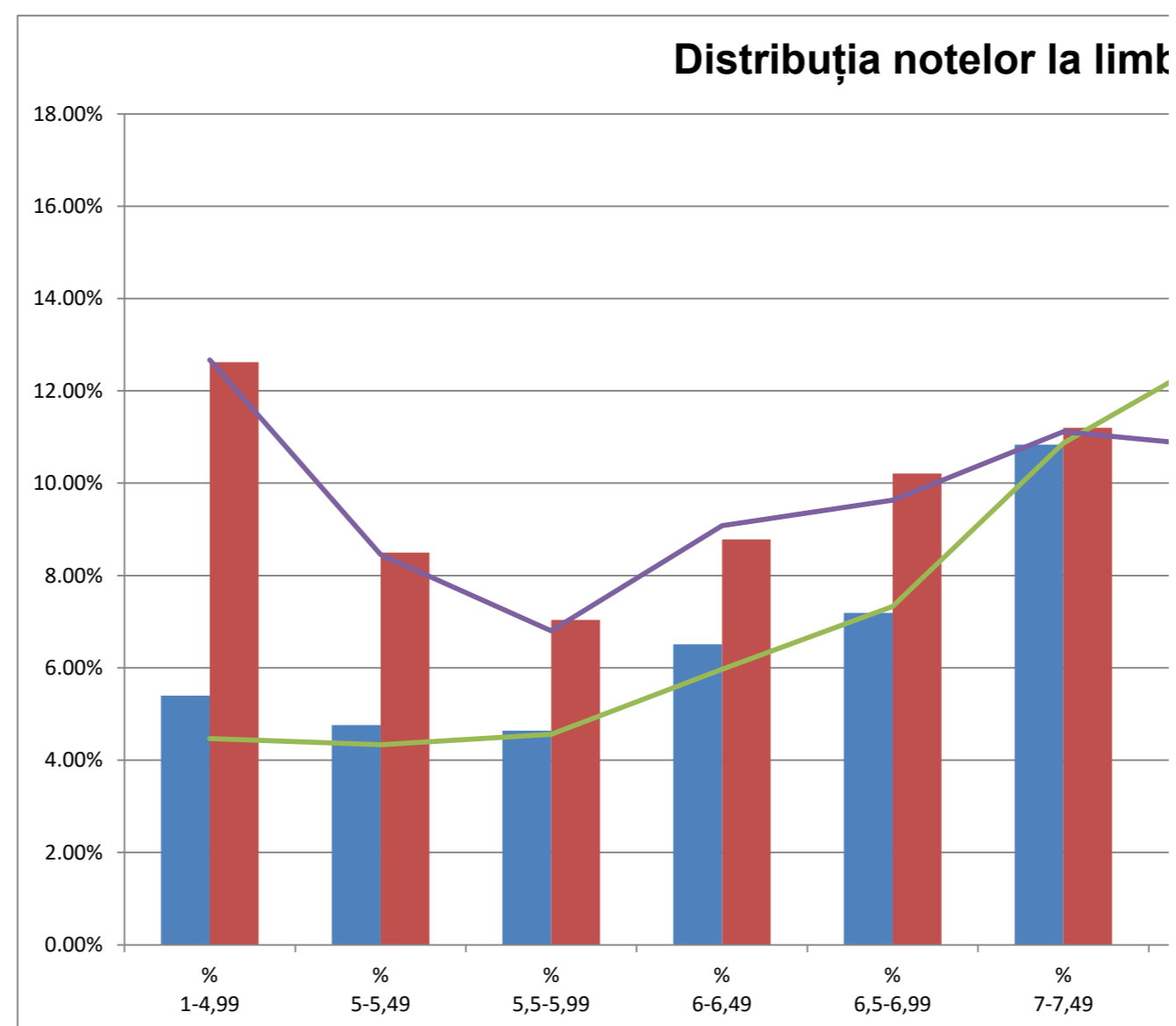


Cu nota 10
3,345
4,245
11,092
4,360
5,873
2,556
4,450

- 2011
- 2012
- 2013
- 2014
- 2016
- 2017

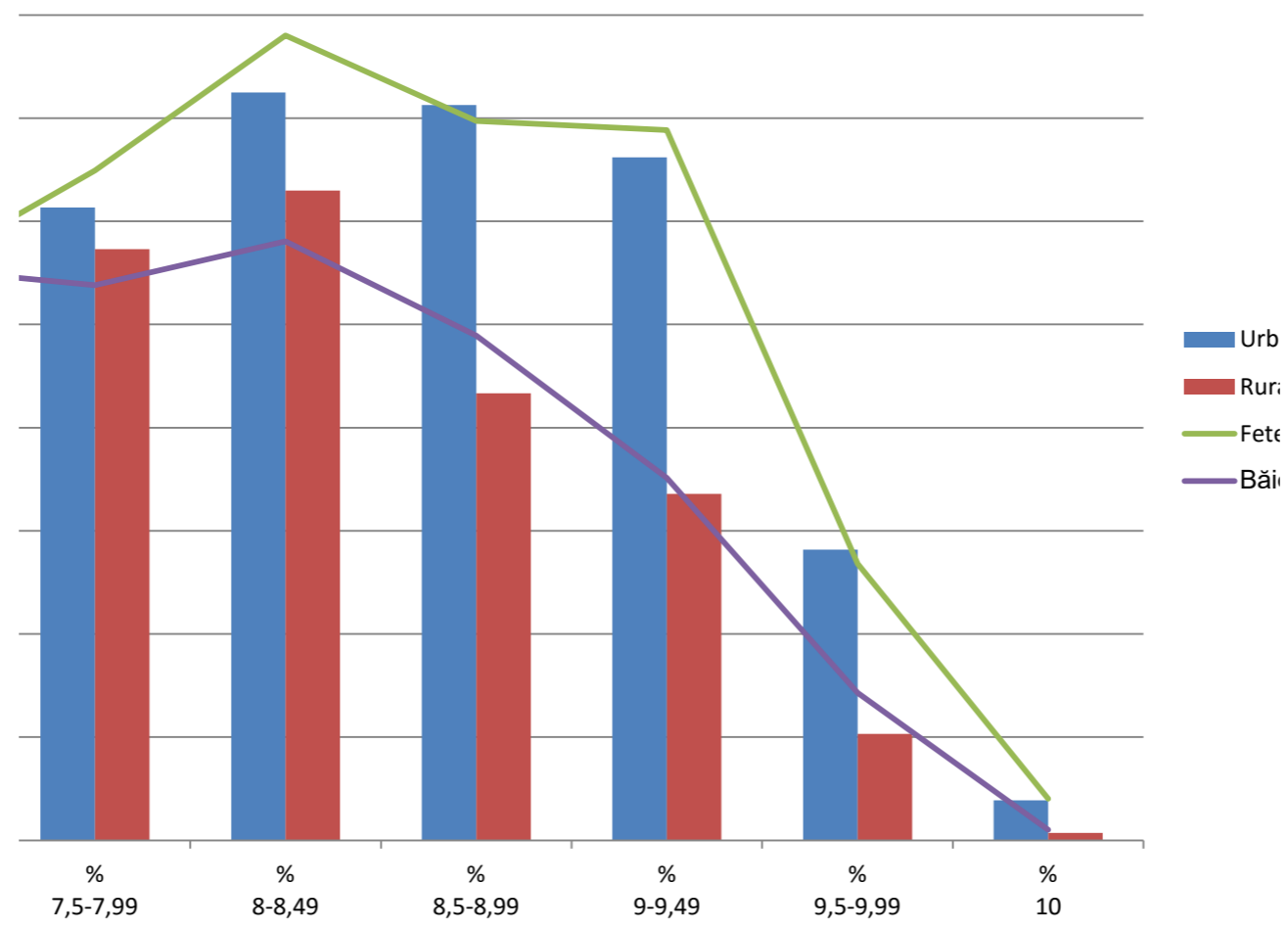
Distribuția notelor la limba maternă pe mediu și sex

Mediu	% 1-4,99	% 5-5,49	% 5,5-5,99	% 6-6,49	% 6,5-6,99	% 7-7,49	% 7,5-7,99	% 8-8,49	% 8,5-8,99
Urban	5.40%	4.76%	4.64%	6.51%	7.19%	10.83%	12.27%	14.50%	14.26%
Rural	12.62%	8.49%	7.04%	8.78%	10.21%	11.20%	11.46%	12.59%	8.67%
Sex	% 1-4,99	% 5-5,49	% 5,5-5,99	% 6-6,49	% 6,5-6,99	% 7-7,49	% 7,5-7,99	% 8-8,49	% 8,5-8,99
Fete	4.47%	4.34%	4.56%	5.97%	7.33%	10.86%	12.99%	15.60%	13.95%
Băieți	12.67%	8.45%	6.80%	9.08%	9.63%	11.11%	10.76%	11.62%	9.78%



% 9-9,49	% 9,5-9,99	% 10
13.24%	5.64%	0.78%
6.72%	2.07%	0.15%
% 9-9,49	% 9,5-9,99	% 10
13.77%	5.36%	0.80%
7.02%	2.86%	0.20%

Nota maternă pe mediu și sex



an
al
e
eți

JUDEȚ	TOTAL Lucrări	din care			TOTAL contestații	% contestații	din care			Contestații cu notă	din care			Au mărit nota	din care			Au micșorat nota	din care		
		Română	Maternă	Matematică			Română	Maternă	Matematică		Română	Maternă	Matematică		Română	Maternă	Matematică		Română	Maternă	Matematică
AB	4,887	2,407	77	2,403	212	4.34%	110	4	98	212	110	4	98	126	65	1	60	67	33	3	31
AG	9,121	4,565	0	4,556	656	7.19%	347	0	309	656	347	0	309	519	325	0	194	102	14	0	88
AR	6,083	2,969	157	2,957	168	2.76%	80	9	79	168	80	9	79	109	65	6	38	51	14	3	34
B	23,267	11,558	167	11,542	1,796	7.72%	919	46	831	1,796	919	46	831	1,203	704	19	480	442	152	16	274
BC	9,392	4,698	15	4,679	432	4.60%	230	0	202	432	230	0	202	311	197	0	114	79	21	0	58
BH	8,926	4,097	739	4,090	466	5.22%	260	21	185	466	260	21	185	297	199	13	85	132	52	7	73
BN	4,758	2,346	69	2,343	143	3.01%	67	1	75	143	67	1	75	95	47	1	47	41	16	0	25
BR	3,487	1,744	0	1,743	207	5.94%	110	0	97	207	110	0	97	140	86	0	54	61	22	0	39
BT	7,308	3,658	0	3,650	239	3.27%	128	0	111	239	128	0	111	164	107	0	57	49	9	0	40
BV	7,358	3,495	393	3,470	395	5.37%	149	59	187	395	149	59	187	198	63	47	88	176	79	11	86
BZ	6,138	3,076	0	3,062	289	4.71%	138	0	151	289	138	0	151	153	74	0	79	100	52	0	48
CJ	8,407	3,945	520	3,942	356	4.23%	193	9	154	356	193	9	154	252	172	5	75	77	13	4	60
CL	3,726	1,867	0	1,859	133	3.57%	82	0	51	133	82	0	51	90	69	0	21	33	11	0	22
CS	3,852	1,919	21	1,912	73	1.90%	49	1	23	73	49	1	23	46	33	0	13	22	14	1	7
CT	10,269	5,144	0	5,125	680	6.62%	374	0	306	680	374	0	306	427	275	0	152	203	78	0	125
CV	3,969	1,453	1,068	1,448	180	4.54%	90	32	58	180	90	32	58	129	68	29	32	35	16	3	16
DB	7,142	3,577	0	3,565	195	2.73%	97	0	98	195	97	0	98	125	75	0	50	51	16	0	35
DJ	8,386	4,204	0	4,182	773	9.22%	471	0	302	773	471	0	302	604	383	0	221	118	65	0	53
GJ	5,763	2,884	0	2,879	369	6.40%	198	0	171	369	198	0	171	212	124	0	88	119	61	0	58
GL	7,050	3,528	0	3,522	465	6.60%	227	0	238	465	227	0	238	254	125	0	129	174	91	0	83
GR	4,186	2,097	0	2,089	87	2.08%	49	0	38	87	49	0	38	50	36	0	14	29	9	0	20
HD	5,383	2,671	50	2,662	166	3.08%	79	2	85	166	79	2	85	71	50	1	20	85	23	1	61
HR	7,339	2,582	2,176	2,581	172	2.34%	82	49	41	172	82	49	41	118	40	44	34	46	35	5	6
IF	4,425	2,210	9	2,206	146	3.30%	73	4	69	146	73	4	69	108	53	4	51	33	19	0	14
IL	3,793	1,898	0	1,895	106	2.79%	59	0	47	106	59	0	47	62	45	0	17	32	9	0	23
IS	11,876	5,945	0	5,931	600	5.05%	289	0	311	600	289	0	311	299	150	0	149	258	128	0	130
MH	3,520	1,762	0	1,758	153	4.35%	84	0	69	153	84	0	69	119	70	0	49	23	12	0	11
MM	7,402	3,656	101	3,645	291	3.93%	131	16	144	291	131	16	144	163	87	5	71	110	42	10	58
MS	8,911	3,787	1,362	3,762	260	2.92%	82	69	109	260	82	69	109	133	51	29	53	108	26	34	48
NT	8,147	4,074	0	4,073	329	4.04%	194	0	135	329	194	0	135	184	109	0	75	110	61	0	49
OT	5,288	2,646	0	2,642	226	4.27%	121	0	105	226	121	0	105	134	83	0	51	71	25	0	46
PH	10,181	5,097	0	5,084	706	6.93%	385	0	321	706	385	0	321	429	235	0	194	235	129	0	106
SB	5,513	2,616	295	2,602	498	9.03%	298	62	138	498	298	62	138	407	254	52	101	70	31	9	30
SJ	3,990	1,809	377	1,804	178	4.46%	104	7	67	178	104	7	67	111	78	1	32	57	25	4	28
SM	5,529	2,422	691	2,416	240	4.34%	122	46	72	240	122	46	72	144	57	43	44	73	51	3	19
SV	12,110	6,066	0	6,044	428	3.53%	225	0	203	428	225	0	203	279	154	0	125	107	45	0	62
TL	2,966	1,487	0	1,479	111	3.74%	63	0	48	111	63	0	48	77	54	0	23	30	8	0	22
TM	8,636	4,236	173	4,227	342	3.96%	176	19	147	342	176	19	147	183	130	8	45	142	37	9	96
TR	4,554	2,279	0	2,275	131	2.88%	63	0	68	131	63	0	68	63	20	0	43	56	36	0	20
VL	5,310	2,656	0	2,654	254	4.78%	125	0	129	254	125	0	129	147	76	0	71	85	41	0	44
VN	5,025	2,515	0	2,510	171	3.40%	76	0	95	171	76	0	95	99	39	0	60	62	33	0	29
VS	6,917	3,460	0	3,457	205	2.96%	86	0	119	205	86	0	119	151	74	0	77	35	11	0	24
	290,290	141,105	8,460	140,725	14,027	4.83%	7,285	456	6,286	14,027	7,285	456	6,286	8,985	5,201	308	3,476	3,989	1,665	123	2,201

JUDEȚ	Înscriși SIMULARE	Prezenți SIMULARE	Procentul elevilor prezenți SIMULARE	Promovați SIMULARE	Procent promovați SIMULARE	Înscriși EVALUARE	Înscriși EVALUARE/ SIMULARE	Prezenți EVALUARE	Prezenți EVALUARE/ SIMULARE	Procentul elevilor prezenți EVALUARE	Promovați EVALUARE	Promovați EVALUARE/ SIMULARE	Procent promovați EVALUARE
AB	2,845	2,634	92.58%	1,463	55.54%	2,460	86.47%	2,403	91.23%	97.68%	1,913	130.76%	79.61%
AG	5,303	4,870	91.83%	2,762	56.71%	4,653	87.74%	4,556	93.55%	97.92%	3,569	129.22%	78.34%
AR	3,596	3,250	90.38%	1,464	45.05%	3,060	85.09%	2,957	90.98%	96.63%	2,118	144.67%	71.63%
B	12,422	11,945	96.16%	8,336	69.79%	11,598	93.37%	11,542	96.63%	99.52%	10,304	123.61%	89.27%
BC	6,288	5,751	91.46%	2,685	46.69%	4,935	78.48%	4,679	81.36%	94.81%	3,588	133.63%	76.68%
BH	5,296	4,654	87.88%	2,302	49.46%	4,214	79.57%	4,087	87.82%	96.99%	2,953	128.28%	72.25%
BN	2,938	2,804	95.44%	1,271	45.33%	2,410	82.03%	2,343	83.56%	97.22%	1,845	145.16%	78.75%
BR	2,697	2,325	86.21%	1,392	59.87%	1,758	65.18%	1,743	74.97%	99.15%	1,612	115.80%	92.48%
BT	4,720	4,405	93.33%	1,833	41.61%	3,736	79.15%	3,650	82.86%	97.70%	2,685	146.48%	73.56%
BV	4,282	3,902	91.13%	2,041	52.31%	3,597	84.00%	3,470	88.93%	96.47%	2,773	135.86%	79.91%
BZ	3,877	3,546	91.46%	1,801	50.79%	3,187	82.20%	3,062	86.35%	96.08%	2,353	130.65%	76.85%
CJ	4,848	4,553	93.92%	2,845	62.49%	4,012	82.76%	3,942	86.58%	98.26%	3,549	124.75%	90.03%
CL	2,794	2,445	87.51%	945	38.65%	1,945	69.61%	1,859	76.03%	95.58%	1,342	142.01%	72.19%
CS	2,319	2,109	90.94%	957	45.38%	1,967	84.82%	1,912	90.66%	97.20%	1,332	139.18%	69.67%
CT	5,911	5,499	93.03%	2,842	51.68%	5,209	88.12%	5,125	93.20%	98.39%	3,769	132.62%	73.54%
CV	1,910	1,552	81.26%	632	40.72%	1,488	77.91%	1,447	93.23%	97.24%	1,039	164.40%	71.80%
DB	4,472	4,070	91.01%	1,963	48.23%	3,681	82.31%	3,565	87.59%	96.85%	2,671	136.07%	74.92%
DJ	5,301	4,586	86.51%	2,399	52.31%	4,357	82.19%	4,182	91.19%	95.98%	2,932	122.22%	70.11%
GJ	3,260	3,142	96.38%	1,577	50.19%	2,961	90.83%	2,879	91.63%	97.23%	2,177	138.05%	75.62%
GL	4,663	4,260	91.36%	2,349	55.14%	3,570	76.56%	3,522	82.68%	98.66%	3,015	128.35%	85.60%
GR	2,477	2,218	89.54%	896	40.40%	2,158	87.12%	2,089	94.18%	96.80%	1,276	142.41%	61.08%
HD	3,231	2,868	88.77%	1,596	55.65%	2,826	87.47%	2,662	92.82%	94.20%	2,030	127.19%	76.26%
HR	2,937	2,798	95.27%	1,240	44.32%	2,622	89.27%	2,577	92.10%	98.28%	1,749	141.05%	67.87%
IF	2,718	2,524	92.86%	1,205	47.74%	2,241	82.45%	2,206	87.40%	98.44%	1,697	140.83%	76.93%
IL	2,420	2,149	88.80%	1,036	48.21%	1,937	80.04%	1,895	88.18%	97.83%	1,348	130.12%	71.13%
IS	8,097	7,580	93.61%	3,816	50.34%	6,106	75.41%	5,931	78.25%	97.13%	4,999	131.00%	84.29%
MH	2,173	1,956	90.01%	897	45.86%	1,806	83.11%	1,758	89.88%	97.34%	1,198	133.56%	68.15%
MM	4,301	4,095	95.21%	1,930	47.13%	3,882	90.26%	3,645	89.01%	93.89%	2,689	139.33%	73.77%
MS	4,737	4,329	91.39%	2,101	48.53%	3,936	83.09%	3,760	86.86%	95.53%	2,851	135.70%	75.82%
NT	4,537	4,375	96.43%	2,161	49.39%	4,123	90.88%	4,073	93.10%	98.79%	2,902	134.29%	71.25%
OT	3,511	3,147	89.63%	1,719	54.62%	2,743	78.13%	2,642	83.95%	96.32%	2,085	121.29%	78.92%
PH	6,454	6,019	93.26%	3,446	57.25%	5,183	80.31%	5,084	84.47%	98.09%	4,453	129.22%	87.59%
SB	3,379	3,045	90.12%	1,669	54.81%	2,867	84.85%	2,602	85.45%	90.76%	2,043	122.41%	78.52%
SJ	2,215	1,983	89.53%	1,014	51.13%	1,896	85.60%	1,804	90.97%	95.15%	1,358	133.93%	75.28%
SM	3,265	2,900	88.82%	1,151	39.69%	2,546	77.98%	2,415	83.28%	94.85%	1,682	146.13%	69.65%
SV	7,295	6,863	94.08%	3,264	47.56%	6,188	84.83%	6,044	88.07%	97.67%	4,535	138.94%	75.03%
TL	1,925	1,765	91.69%	716	40.57%	1,512	78.55%	1,479	83.80%	97.82%	1,061	148.18%	71.74%
TM	5,033	4,633	92.05%	2,301	49.67%	4,308	85.60%	4,225	91.19%	98.07%	3,051	132.59%	72.21%
TR	2,766	2,403	86.88%	1,142	47.52%	2,379	86.01%	2,275	94.67%	95.63%	1,444	126.44%	63.47%
VL	3,264	2,857	87.53%	1,366	47.81%	2,720	83.33%	2,654	92.89%	97.57%	2,069	151.46%	77.96%
VN	3,030	2,708	89.37%	974	35.97%	2,618	86.40%	2,510	92.69%	95.87%	1,754	180.08%	69.88%
VS	4,611	4,301	93.28%	1,763	40.99%	3,534	76.64%	3,457	80.38%	97.82%	2,481	140.73%	71.77%
TOTAL 2016	174,118	159,818	91.79%	81,262	50.85%	144,929	83.24%	140,712	88.05%	97.09%	108,294	133.27%	76.96%